



ImportFromPoland

POLISH MATERIALS GUIDE

Irish Self-Builder's
EasyBuyingGuide - 2025/26

*Your step-by-step handbook to
sourcing quality building products
from Poland with confidence.*



Essential Information



Trusted Suppliers



Practical Tips

2025/26
EDITION

**A practical handbook for self-builders and
professionals in Ireland.**

**Explore the best of Polish windows, doors, roofing, and
interiors — discover where quality meets value.**



WELCOME TO YOUR EASY BUYING GUIDE 2025/2026

The essential handbook for sourcing Polish building materials.

Why this guide exists

Building or renovating a home can be overwhelming — hundreds of decisions, thousands of materials, and no time to compare everything.

The **EasyBuyingGuide** was created to make that process easier for Irish self-builders and professionals who want access to high-quality Polish materials — without the language barriers, shipping complications, or VAT confusion.

Whether you are ordering windows, doors, roofing, or interiors, this handbook explains **how to plan, quote, and order** through ImportFromPoland and Supersender, step-by-step.

You'll find trusted suppliers, product comparisons, and transparent pricing information — all based on my direct experience gained over the years of supply and logistics between Poland and Ireland.

OUR MISSION

To connect Irish self-builders and construction professionals with the best Polish manufacturers and suppliers — combining European quality, transparent pricing, and reliable delivery in one streamlined process.

This guide isn't a brochure; it's a reference companion. Keep it by your side through your build and use it whenever you need to:

- ✓ Understand material options and price differences
- ✓ Check ordering and delivery timelines
- ✓ Learn how to get the most from our app and services
- ✓ Explore trusted Polish showrooms and stores

We hope it saves you time, money, and stress — while helping you discover just how much value Poland can offer.

*"We built ImportFromPoland around one simple idea —
make buying from Poland as **easy as buying from home.**"*

— MAK Consulting team



Table Of Contents

1. Welcome & Introduction	2
<ul style="list-style-type: none">• Why EasyBuyingGuide exists• Who this guide is for• Quick facts & mission• Polish-Irish expertise	
2. How ImportFromPoland Works	5
<ul style="list-style-type: none">• The 5-step process• What makes it so unique• Supplier vs Courier - differences explained	
3. Logistics, Delivery & Insurance	7
<ul style="list-style-type: none">• Weekly schedule• Delivery options and costs explained• Insurance & damage claims process• VAT & customs handling• Warranty, returns, claims handling	
4. Smart Buying Matrix	22
<ul style="list-style-type: none">• Categories with savings• Best local vs import choices• Practical mixed-order examples	
5. Windows & Doors	25
<ul style="list-style-type: none">• Introduction & system differences explained• Building regulations differences• Glass specification• Window hardware options• "Warm"/airtight installation systems and differences• Sash windows• Roof windows• Doors• Sliding doors, HST, PSK comparison	
6. Roofing, Cladding & Gutters	48
<ul style="list-style-type: none">• Standing seam systems• Clay roof tiles and slate• Rainwater systems• Logistics & delivery considerations	
7. Insulation & Building Materials	49
<ul style="list-style-type: none">• EPS, XPS, PIR, Mineral Wool• ETICS systems & accessories• Volume transport notes	



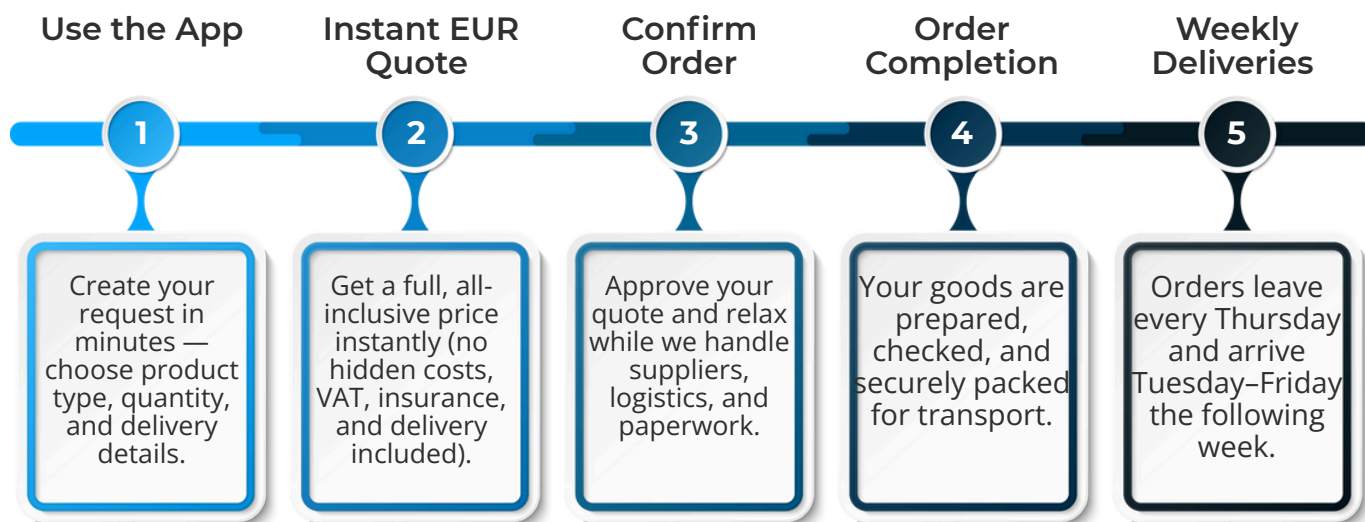
Table Of Contents

8. Bathrooms & Sanitaryware	50
• Trusted brands	
• Fixtures & finishes	
• Shipping considerations	
9. Tiles, Flooring & Finishes	51
• Tile & flooring brands	
• Adhesives, grouts & silicones	
• Design & coordination tips	
10. Furniture, Interiors & Lighting	52
• Ready-made & made-to-measure	
• Supplier overview	
• Transport & electrical standards	
11. Fences, Gates & Metalwork	53
• Prefabricated and custom systems	
• Everything you need to know about glass balustrades	
• Finishes & packaging	
12. ImportFromPoland App Instruction	54
• App introduction and instant quote instruction	
• Dispatch & delivery information	
• Items requiring bespoke quote	
• Useful tips	
13. Supersender App Instruction	57
• Account set up and subscriptions	
• Reporting incoming delivery	
• Requesting local collection quote	
• Requesting orders dispatch preparation	
14. Shop Directory – Trusted Polish Stores	60
• DIY & Building Materials Stores (60)	
• Bathrooms & Sanitaryware (61)	
• Tiles Flooring & Finishes (62)	
• Insulation, ETICS, Renders & Materials (63)	
• Furniture, Light fittings, Curtains & Blinds (64)	
15. Showroom Tours in Poland	65
• MAK Consulting's tours stops description	
• Food, Beverages, and going out recommendations	
• Cost breakdown	
• Comparison - MAK's Tour or self-organised	
16. About the Author	85



HOW IMPORTFROMPOLAND WORKS

The simple 5-step process from quote to delivery.



💡 *Typical lead time: 2–3 weeks from confirmation to delivery (depending on product type and order size).*

WHY IT WORKS SO WELL

Smart logistics and complete service — from start to finish.



Consolidated Shipping

Multiple orders combined into one secure delivery — fewer shipments mean lower cost and less risk of damage.



One Invoice, One Contact

You communicate with one English-speaking team for quotes, payments and delivery updates — no multiple suppliers or emails to chase.



Fully Insured & Tracked

Every shipment is insured door-to-door and tracked from our warehouse in Poland to your delivery point in Ireland.

Smart consolidation and one point of contact — that's how ImportFromPoland keeps your project moving smoothly.



ImportFromPoland

BEHIND EVERY QUOTE - WHAT'S INCLUDED

Transparent pricing designed for simplicity.

At ImportFromPoland, every quote you receive is the final all-inclusive price in EUR — automatically calculated by our system.

There's no need to estimate transport, add VAT, or worry about hidden costs.

Each price is calculated in real time, based on:

- ✅ **Product price** from trusted Polish manufacturers and distributors.
- 🚚 **Insured transport** directly to your delivery address in Ireland.
- 📄 **Service fee**, covering supplier management, communication, and order tracking.
- 🇪🇺 **VAT compliance**, paperwork, and customs handling.
- 💱 **Currency adjustment**, ensuring a stable EUR price unaffected by exchange fluctuations.

📌 Everything is already included — so what you see in your quote is what you pay. No surprises, no extra invoices later.

SUPPLIER VS SUPERSENDER - WHY IT MATTERS

	ImportFromPoland (supplier)	Supersender
Contract type	You buy directly from ImportFromPoland, one invoice in EUR.	Separate transactions with each store.
Communication	One English-speaking team handles everything.	Multiple points of contact at different stores
Warranty & Returns	Centralized aftersales and replacements.	You must manage claims with each store individually.
VAT & paperwork	Fully compliant and included in the quote. 0% VAT rates for EU VAT registered businesses.	Multiple invoices, some 0% VAT, some 23% VAT.
Delivery	Consolidated, insured transport, included in the initial quote	Consolidated, transport by Supersender. Exact cost known after final dimentions are ready.



SUPPLIER VS COURIER — THE REAL DIFFERENCE

Why working with ImportFromPoland gives you full control, protection, and peace of mind.

1. Contract Type — One Invoice, Full Protection

When you order through **ImportFromPoland**, you buy directly from one Polish supplier — not multiple stores or shipping companies.

That means your **invoice, insurance, and contract of sale** are all handled under one legal framework.

If anything goes wrong in transit, or an item arrives damaged, there's no confusion about who's responsible — **we are**.

You don't need to coordinate with couriers, translators, or third parties.

By contrast, **buying directly** from **individual** stores in Poland means:

- Each supplier issues a separate invoice (often only in Polish).
- You become the importer on record, legally responsible for VAT declarations and claims.
- Couriers will only cover physical transport, not product condition or documentation errors.

📌 *With ImportFromPoland, one contract protects your entire order — from manufacturer to your site.*

2. Communication — One Team, One Language

Our customers consistently tell us how much easier it is to deal with one contact who speaks fluent English and understands both Polish and Irish business habits.

You get **one inbox, one thread, and one timeline** covering all your items — from small fittings to bespoke joinery.

We coordinate directly with Polish suppliers in their own language, ensuring specifications, finishes, and measurements are always correct before production starts.

You receive confirmations in English, along with realistic delivery timelines and photos when your goods are packed.

Ordering directly often leads to:

- 3–5 suppliers replying at different times and in Polish.
- Difficulty confirming technical details (especially for windows, tiles, or furniture).
- Missed updates or delayed responses caused by national holidays or time zones.

📌 *ImportFromPoland bridges that gap — clear, consistent communication that saves you time and prevents costly mistakes.*



3. Warranty & Aftersales — Centralised Aftersales & Support

Every product you buy through ImportFromPoland is covered under one warranty system, and we handle all aftersales issues on your behalf.

That includes:

- Coordinating replacements or repairs with the original manufacturer.
- Organising insured collection and return transport if needed.
- Handling warranty paperwork and photos in Polish and English.

You don't have to contact multiple suppliers, send emails in another language, or manage insurance claims yourself.

In comparison, when buying directly:

- Each supplier has their own warranty terms and claims procedure.
- Couriers rarely assist — they only cover damage caused during their part of the journey.
- It's up to you to prove fault, negotiate replacements, and cover shipping costs back to Poland

📌 *Our centralised system means one message from you starts the entire process — and we take care of the rest.*

4. VAT & Paperwork — Always Correct and Hassle-Free

Understanding VAT on international purchases can be confusing — especially when buying directly from multiple Polish retailers or online stores.

ImportFromPoland **removes that complexity entirely**, giving you one compliant invoice in EUR, fully accepted by Irish accounting systems.

When you order through ImportFromPoland, VAT is handled automatically and correctly under EU cross-border trade rules:

- **0% VAT** for registered EU businesses who provide a valid VAT number at the time of order. Your invoice is issued with the correct “reverse charge” notation, so you simply account for it locally - no refund claims or tax delays.
- **23% VAT** applied to non-VAT-registered or private customers, already included in your final price - transparent and clearly listed.
- All invoices are bilingual (English/Polish where needed) and formatted for easy use by Irish accountants.

That means no hidden VAT, no mismatched invoices, and no chasing refund forms across borders.

Ordering straight from Polish stores may seem cheaper at first glance, but VAT quickly becomes a serious obstacle:

- **Many Polish suppliers cannot apply 0% VAT** to exports for private or non-registered foreign customers. You'll pay the full **23% Polish VAT upfront**, even though the goods are leaving the country.
- To recover that tax, you must go through the Polish VAT refund process — a complex and time consuming procedure that can take months.
- Refund requests require Polish-language forms, original stamped invoices, and proof of export accepted by the Polish Tax Office.
- Many Irish companies discover too late that their refund entitlement **does not apply** if they purchased as individuals or if documents are incomplete.

📌 *In short: paying VAT twice, waiting months for refunds, and struggling with paperwork is a real risk when buying directly.*



How ImportFromPoland Simplifies It

By being your **official Polish supplier**, ImportFromPoland manages the entire compliance chain for you, register the export correctly, file the VAT-exempt sale under EU rules, and issue a ready-to-use invoice in EUR. No translation, no refund requests, and no cash locked in foreign tax offices.

Every invoice we issue includes:

- The correct VAT rate and your EU VAT number.
- Legal “reverse charge” notation when applicable.
- Full export documentation and delivery proof.

📌 *It's one of the biggest advantages of working with ImportFromPoland for many businesses — your tax is handled right the first time.*

5. Delivery & Insurance — Safer, Smarter Transport

Every shipment organised by ImportFromPoland travels under our **insured, consolidated logistics network**. We combine multiple supplier orders into one fully documented delivery, reducing handling, cost, and the chance of damage.

Your goods are checked, photographed, and securely packed at our warehouse before dispatch. You'll receive an estimated delivery window (typically Tuesday–Friday) and tracking updates as your shipment moves.

When managing delivery yourself:

- Each courier may use a different service level and liability policy.
- Some shipments are uninsured or require claims in Polish
- Mixed arrival dates make site planning difficult.
- Overall shipping costs will work out much higher, than a single, consolidated delivery

📌 *Our insured, consolidated deliveries ensure your materials arrive together — on time and in perfect condition.*

“In short — we're not a courier.”

*ImportFromPoland acts as your direct supplier.
That's what makes us responsible for your products,
your paperwork, and your peace of mind.*



CASE STUDY — FROM CASTORAMA TRIPS TO CLICK-AND-DELIVER CONFIDENCE

How one Irish developer discovered a better way to buy from Poland

For several years, a local developer from Ireland took the same route for every new project — he would fly to Poland, rent a car, and spend days walking through DIY stores with a list in hand. The plan was simple: buy as much as possible to fill a full artie lorry and bring everything back home at once.

It sounded efficient — in theory.

In practice, it meant weeks of preparation, constant email exchanges with a Polish sales rep of only one of the stores, and long delays waiting for price confirmations or product availability updates. Once he finally confirmed the order, he had to calculate the load weight, measure space on the truck, and hope that everything would fit — but not exceed the legal limit. It was a stressful, time-consuming puzzle.

Even with all the effort, on a €20,000 order he managed to save only around €1,000 compared to ImportFromPoland — and that was after years of trial and error and only because he had learned how to handle Polish VAT paperwork on his own.

The Hidden Risks of “Doing It Yourself”

Those savings came at a price:

- Three full days in Poland for shopping and paperwork.
- Flights, hotels, transport, and the cost of taking time off site.
- Weeks of email coordination — all in Polish or through translation apps.
- No insurance coverage for broken or missing goods beyond what couriers allowed.

Imagine this:

After weeks of coordination and one exhausting trip, your shipment finally arrives — only to discover that **half a pallet of tiles is broken**.

The courier's insurance will eventually cover the cost, but the process could take **months**.

In the meantime, you'd have to **buy replacements**, arrange another delivery, and face unnecessary project delays.

Or picture another scenario:

Your invoice from a non EU-VAT registered supplier is issued entirely in Polish, and a small detail goes unnoticed.

Later, you find out your **VAT refund on a €20,000 order is rejected** — a **€4,600 loss** caused by a single clerical error.

These are not unusual cases — they happen more often than people realise when buying directly from abroad.

Every mistake or missing document means stress, **time, and money lost**.



A New Way To Buy

After discovering ImportFromPoland, everything changed.

Now, instead of flying to Poland, he sends his requirements directly through the app and receives an instant all-inclusive EUR quote.

No need to fill a full lorry at once — partial or mixed orders are combined into one insured delivery, arriving safely every week.

He can choose from over 30 trusted suppliers, not just one store, and he no longer worries about paperwork, VAT, or insurance.

If anything ever goes wrong, the ImportFromPoland team handles it — quickly, professionally, and in English.

What's more, his single point of contact now gives him access to the best-value windows, glass balustrades, and roofing materials, all coordinated within the same order.

One partner, one invoice, one delivery — and every item arrives together, insured and ready for installation.

"After years of doing everything myself, I finally have a partner who takes care of it all.

No flights, no stress, and no more VAT surprises — just one invoice, and everything arrives"



Windows, bathroomware, tiles and more materials on the way to the client



Modern, energy efficient windows already in place only few days later



LOGISTICS, DELIVERY, INSURANCE

Make or break part of any long distance purchase. How to avoid biggest risks and ensure you're covered for any scenario

When ordering building materials from abroad, logistics often become the trickiest part of the process. Transport costs, insurance policies, customs paperwork and VAT rules differ from supplier to supplier — and one small oversight can easily turn savings into losses.

This chapter explains in detail how the process works across the market and how ImportFromPoland removes the risk, delay and uncertainty from it.

1. Weekly Schedule

Most self-builders and small contractors rely on predictable timing.

ImportFromPoland organises **weekly deliveries** from southern Poland (Katowice region) to Ireland.

- **Truck departures:** every **Thursday** (sometimes Friday morning).
- Typical **delivery** window: Tuesday – Friday **the following week**.
- **Order cut-off:** orders **confirmed and paid** by Thursday 18:00 (CET) are loaded the following week.
- **Consolidation:** goods from multiple suppliers are collected and checked in our warehouse before loading.
- **Tracking:** once the truck leaves Poland, clients receive an estimated delivery day; the driver contacts them in advance to confirm unloading conditions.

Result: a reliable door-to-door time of 5–7 days, compared to the 2–3 weeks common with independent freight or container shipping.

2. Delivery Options and Market Comparison

Transport between Poland and Ireland can be organised in several ways, each with different costs, limitations and risk levels.

Road Freight (Standard Pallet or Lorry Transport)

Type	Typical Cost	Capacity	Transit Time	Notes
Single pallet	from €300 + VAT	120x80cm / <650kg	7-10 days	Good for smaller loads; limited cost efficiency for multiple pallets
½ artic lorry	from €3,300 + VAT	12/13 pallets / 12t	5-7 days	Ideal for medium-size projects
Full lorry	from €5,900 + VAT	24-26 pallets /24t	5-7 days	Most efficient per-pallet rate; full control of load

This option provides full road insurance (CMR) and flexible unloading, with vehicles equipped with their own straps and securing systems.



Sea-Freight (Shipping Containers)

A **40" High Cube container** shipped from Poland to Ireland costs around **€3,500 + VAT**.

A **20" container** is only marginally cheaper (\approx €3,000 – €3,200 + VAT), so the larger unit is usually the only practical choice.

However:

- Unloading access is limited to **rear doors ~2.35m wide**; wide or long items can be problematic.
- Containers include only **two free hours of unloading** before extra charges apply.
- Forklift access is required — ideally via a ramp to drive into the container.
- Loading must be precisely planned: items positioned near doors for safe removal.
- Sea route timing:
 - Poland → Port of Gdynia
 - Gdynia → Rotterdam (weekly ship)
 - Rotterdam → Dublin (1 week wait + 4 days at port)
 - Local delivery: 1–2 days
 - → \approx 3 weeks door-to-door

Hidden cost:

Container straps/ lashings are not reusable. Expect to buy minimum **15–20 sets × €10 each** for heavy cargo — a small but cumulative expense.

Smart tip:

Some clients **buy the container** their goods arrive in, turning it into secure on-site storage.

Used, seaworthy containers cost **€2,000 – €2,500 + VAT**, come with a one-year seaworthiness certificate, and can be resold later when no longer needed.

How ImportFromPoland Simplifies It

Whether road or sea freight is used, ImportFromPoland:

- Consolidates orders from multiple suppliers.
- Packs and secures every shipment professionally.
- Organises all loading, transport and insurance.
- Provides a single invoice in EUR, already including service, delivery, VAT (if applicable) and insurance.

Clients avoid the hidden costs and complications that come with arranging multiple separate shipments.



Two 40" HC Containers purchased by a builder at the early stages of the project unloaded by mobile crane in minutes after arrival



3. Insurance & Damage Claims

When goods travel over 2,000 km across Europe, even the best packaging can't eliminate risk entirely. Understanding how freight insurance works — and what happens when something goes wrong — is key to protecting your investment.

What CMR Insurance Really Covers

All international road transport within Europe falls under the **CMR Convention** (Convention on the Contract for the International Carriage of Goods by Road).

It sets the carrier's responsibility between the moment they collect the goods and the moment they deliver them.

However, there's a catch:

CMR limits the carrier's liability to 8.33 SDR per kilogram of gross weight — roughly €10 / kg.

So if your 100 kg crate of fittings worth €3,000 is lost or damaged, the basic compensation may reach only €1,000.

This is why CMR should be seen as basic protection, not full insurance coverage.

The Standard Claim Process (When You Arrange Transport Yourself)

If you book a courier, forwarder, or container company directly, the process typically looks like this:

a) **Inspect the goods immediately on delivery.**

- If you see any visible damage (dents, tears, wet boxes, rattling packages), **note it on the CMR** delivery note before signing.
- Describe the damage clearly — e.g. "Pallet 3, top corner crushed; 2 cartons opened."

Don't sign the CMR document until you're happy with the delivery condition. If you spot any damage that could have occurred in transit, ensure to note it on the document and keep your copy.



b). **Photograph the damage.**

- Include close-ups of the problem and wide shots showing labels and pallets.
- Always keep the original packaging until the claim is resolved.

c) **Notify the carrier in writing within 24 hours. (7 days for non-obvious damage)**

- Email with photos and the signed CMR copy is usually accepted.
- If reported later, many carriers will reject the claim.

d) **Wait for insurer assessment.**

- Expect 4–8 weeks for evaluation; in complex cases, even longer.
- Carriers or brokers may require original documents posted to them.

e) **Outcome:**

- Compensation limited by weight (\approx €10/kg) and proven direct damage.
- Consequential losses (delays, labour, re-ordering) are not covered.

Hidden Risk: EXW Incoterms

When you buy directly from a manufacturer or online store and arrange your own transport, your sale terms are usually **EXW – Ex Works**.

That means:

- The seller's responsibility ends once goods leave their warehouse.
- From that moment, you own all transport risk, insurance, and customs obligations.
- Any damage in transit is legally your problem, not the seller's.

Other common terms:

Term	Who Arranges Transport	Who Bears Risk	Who handles Export docs	Typical use
EXW	Buyer	Buyer (from pickup)	Buyer	Cheapest on paper; higher risk
DAP	Seller	Seller until arrival at site	Seller (export) Buyer - Import	Fixed delivery costs, but buyer to arrange taxes and duties
DDP	Seller	Seller	Seller	Everything covered - Standard at ImportFromPoland



Case Study: When “Cheaper” Becomes Expensive

Client example: *During a showroom tour, one of our clients ordered custom flashings from the UK. The supplier offered delivery for €150, but the client thought DPD at €50 would be cheaper.*

Four days later, the flashing arrived — dented and unusable.

DPD claimed “insufficient packaging.”

The supplier argued that their regular courier never had damage issues, and since the buyer arranged the transport, the sale was EXW.

Result: no refund, no replacement, and days of lost time.

Lesson learned:

Saving €100 on delivery can cost far more in re-ordering, delays and frustration.

How ImportFromPoland Handles It

With ImportFromPoland, your responsibility starts **only when you receive the goods in good condition.**

- Every order travels under **full cargo insurance**, not just CMR minimum.
- You get **one point of contact** for claims — us.
- If anything arrives damaged, we:
 - a. Verify with your photos.
 - b. Process the claim directly with our insurer.
 - c. **Send a replacement** without waiting for the claim to settle.

You stay focused on your project; we handle the paperwork.

Pro Tip: *Always photograph the delivery before unwrapping — even when it looks perfect. It takes 30 seconds and may save hours later.*

4. VAT and Customs Handling

Taxes and customs are where many cross-border projects stumble.

Between VAT registration rules, export proof requirements, and refund procedures, it's easy to get lost. Here's how it really works — and how to keep it simple.

Private Buyers

For individuals building or renovating privately:

- All prices already include 23% Polish VAT. Same as in Ireland
- No additional customs or import duty — Poland and Ireland are both in the EU.
- You don't need to register, file, or reclaim anything.

It's as simple as buying from a local store, only cheaper.



B2B – VAT-Registered Companies

If your company has an active EU VAT number, purchases qualify for 0% intra-EU VAT.
Requirements for sellers:

- Buyer's valid EU VAT number to be shown on the invoice (verified via VIES).
- Proof of export (signed CMR or other transport evidence).
- Proof of payment (bank transfer, card payment)

Some suppliers may refuse to zero-rate invoices without this proof, fearing tax liability if goods never leave the country.

They might therefore:

- Request a **refundable VAT** deposit equal to 23%, or
- Accept a **buyer's declaration** at their own risk.

Either option creates extra administration — unless the entire process is handled for you

Non-EU-VAT-Registered Businesses

If your company is not VAT-registered or operates below thresholds:

- You must pay 23% VAT.
- To reclaim it later, you'd need to use a refund agency — typically charging 15–25% of the recovered VAT.

ImportFromPoland's Simplified VAT Model

Buyer Type	VAT Rate	Who Handles Transport	Paperwork	Your Effort
Private Client	23%	ImportFromPoland	Included	None
EU VAT Registered Company	0%	ImportFromPoland	We provide proof of export	None
Non-VAT Business	23%	ImportFromPoland	Included	None

- All EUR quotes already include delivery, service, insurance, and VAT (if applicable).
- No deposits, no hidden taxes.
- We store all export evidence in case your tax office ever requests it.

Did You Know?

If you buy directly EXW from a Polish supplier and arrange your own transport, you must prove export within 90 days or risk being re-invoiced with 23% VAT + penalties.



5. The Bigger Picture: Time, Cost and Risk

Stage	ImportFromPoland	Direct Freight / Self organised transport
Supplier coordination	We consolidate everything	Multiple suppliers, self -managed
Loading & packaging	Verified packaging, standardised	Supplier-dependent, inconsistent
Insurance	Full cargo insurance	Often unclear or limited
Claim handling	We replace, then claim	You cover the cost of replacement, then claim
VAT paperwork	We manage and store it	Managed by client
Delivery time	5-8 days weekly service	Variable
Overall stress	Minimal	High

Summary:

With direct freight you may save €50 – €100 per pallet, but expose yourself to thousands in risk, hours of paperwork, and unpredictable lead times.

ImportFromPoland turns all of that into a single transparent transaction — one invoice, one schedule, one responsible partner.

Before accepting a delivery:

- ✓ Inspect packaging and count pallets.
- ✓ Note any dents, holes, or wet spots on the CMR.
- ✓ Take photos before cutting straps.
- ✓ Sign “received with visible damage” if anything looks suspicious.

These four steps are enough to secure your right to a full replacement.



6. Warranty, Returns and After-Sales Responsibility

Even with the best manufacturers and logistics systems, occasional issues can still occur — a wrong colour in the box, a faulty tap a few months later, or a defective sensor on a shower panel.

The key difference lies not in whether these things can happen, but in who takes responsibility when they do.

The ImportFromPoland Warranty Promise

When you purchase through **ImportFromPoland**, we are your **official supplier**.

That means:

- **We are responsible** for ensuring every product you receive matches its description and specification.
- If you open a box and discover the wrong item — for example, a white sink instead of the anthracite one marked on the packaging — we simply **organise a replacement at no extra cost**.
- You don't need to contact the store, supplier, or manufacturer.
- We handle the verification, organise the collection if required, and send out the correct item on the next available delivery.
- If a product develops a manufacturer **fault during its warranty period** (typically 12–24 months depending on category), we manage the entire process with the producer on your behalf.

In practice, this means that even long after your order was delivered, you have one contact, one invoice, one **responsible company** to turn to — ImportFromPoland.

Pro Tip: *Always check products soon after delivery, even if they won't be installed immediately. Reporting an issue early allows us to act faster and ensures a smoother replacement.*

Warranty When Buying Directly from Stores (EXW or Supersender Mode)

When you buy goods directly from Polish stores and either:

- arrange your own courier (**EXW** terms), or
- send them via **Supersender** as your transport partner,

the warranty responsibility follows a very different route.

- The **store** or **manufacturer** remains the warrantor.
- Their responsibility applies **only to the original point of delivery**
- If a problem appears later (wrong colour inside a sealed box, or a fault after several months):
 - a. You must first **return the item** (at your own cost) either to the store or to the Supersender depot in Poland.
 - b. The store then verifies the claim and either repairs or replaces the product.
 - c. The **replacement or repaired item** is sent back to the original delivery location (the store or Supersender).
 - d. You then **pay for transport** from there to Ireland on the next available load.

This process is fully compliant with Polish and EU law, but it's slower and can involve multiple shipments and additional costs — especially for bulky or fragile goods.



Supersender Warranty Assistance Option

To make warranty handling easier for Supersender users, **MAK Consulting** can provide logistical assistance:

- **Receive warranty returns** in Poland on your behalf and coordinate their return to the store.
- Once a replacement arrives, **store it temporarily** and send back to you on the next Supersender route.
- Optional **Warranty Handling Package** covers the admin and coordination so you don't have to track multiple shipments yourself.

However, the **cost of transport** (both ways) remains the buyer's responsibility unless agreed otherwise with the store.

Returns and the 14-Day Rule

EU consumer law gives private buyers the right to withdraw from a distance purchase within **14 days** of receiving the product.

However, when goods travel across Europe under **EXW** or via **Supersender**, that window can be almost gone before you even unpack the delivery.

For example:

- Goods are collected from the store on day 1.
- Consolidated and shipped over 7–10 days.
- Delivered to you around day 10–12.
- By that time, your 14-day return period may already be over or nearly expired.

Even if you are still within the statutory timeframe:

- You must **cover all shipping costs** to return the item to the original supplier in Poland.
- For bulky or fragile items, return shipping can easily exceed the item's value.
- Most stores will refund only the product cost, **not the original delivery charge**.

Pro Tip:

Unless the product is defective, it's often more economical to sell an unwanted new item locally than to return it internationally.

Situation	Who handles replacement/warranty	Who pays return shipping	Replacement sent where	Your Effort
ImportFromPoland	ImportFromPoland	ImportFromPoland (except 14-day returns)	Directly to you	Low
Supersender	Original supplier	Buyer	To Supersender warehouse	Medium
EXW - direct store purchase	Original supplier	Buyer	To store	High



7. Conclusion

Understanding how ordering, delivery, insurance and VAT work across borders allows you to make **smarter, better-protected decisions**.

There is no single “one-size-fits-all” answer. The right option depends on your project size, timing, and how much you want to be involved in the logistics process.

When to use ImportFromPoland full service:

- You want everything handled from start to finish — ordering, packing, insurance, paperwork, and delivery.
- You prefer a single contact and a guaranteed all-inclusive price.
- You value time, predictability and peace of mind above small potential savings.

When to take a more active role:

- You already have trusted Irish partners or your own crew who can help with transport.
- You’d like to combine orders from several Polish or European suppliers and coordinate them yourself.

For those clients, **MAK Consulting’s Irish-oriented Supersender Service** offers the **best of both worlds**.

The Supersender Bridge

The **Supersender** is a dedicated, weekly Ireland-bound logistics service managed by MAK Consulting — designed for clients who want more hands-on control over their sourcing but still expect reliability, transparency and protection.

- You choose and purchase products directly from your preferred Polish stores or suppliers.
- Order them directly to MAK Consulting’s warehouse and log your order on the dedicated app for tracking
- You can select the service level that fits your needs — from standard shipping to full insurance coverage and unloading coordination in Ireland.
- Choose between your own transport arrangements or have this organised for you.

This hybrid approach gives you:

- ✓ **Freedom** to source wherever you wish.
- ✓ **Security** through controlled packing and optional insurance.
- ✓ **Efficiency** with shared logistics and weekly departures.
- ✓ **Support** from a Polish team experienced in Irish market.

In short: *Supersender lets you stay hands-on whilst reducing some of the risk.*

Confidence, Choice and Control

Whether you want a **turnkey supply partner (ImportFromPoland)** or a **flexible freight bridge** (Supersender by MAK Consulting), both paths share the same foundation:

- Proven routes between Poland and Ireland.
- Experienced staff on both sides of the transport chain.
- Reliable timing and clear documentation.
- Optional insurance coverage for full peace of mind.

So you can take your decision informed, not improvised — knowing the advantages, limitations, and safeguards of each option.

And whichever route you choose, your materials will travel securely, efficiently, and professionally.



SMART BUYING MATRIX - WHERE SAVINGS MAKE SENSE

A clear map of where buying from Poland can bring real savings — and where local purchase remains the smarter move.

Why You Need a Smart Buying Approach

Not every building material offers the same return on effort.

Some products deliver **thousands in savings** even after freight, VAT and insurance. Others — once shipping, warranty, or site risks are added — might only save a few euros or even cost more.

The **Smart Buying Matrix** helps you separate the real opportunities from the false economy.

It evaluates each product type against five key factors and gives an overall “buy smart” rating you can rely on when planning your order.

The Five Evaluation Factors

Factor	Meaning	Why It Matters
1. Price Gap	Difference between average Irish and Polish retail/trade prices.	Shows where genuine purchase savings exist before logistics.
2. Delivery Efficiency	Weight, size and packaging suitability for long-distance freight.	Heavy or fragile goods reduce per-item savings.
3. Specification Compatibility	Ease of fitting or matching with Irish standards.	Prevents surprises during installation.
4. Warranty & After Sales Risk	Practicality of repair, replacement and returns.	Avoids losses on complex or fragile goods.
5. Local Availability	How easy and expensive it is to buy similar products in Ireland.	Identifies gaps where importing truly adds value.



The Smart Buying Matrix

Category	Price Gap	Delivery Efficiency	Compatibility / Risk	Warranty Ease	Local Availability	Overall potential
Windows & Doors (PVC / Aluminium)	★★★★☆	★★★★☆	★★★★☆	★★★★☆	★★☆☆☆	● High
Timber Windows	★★★★☆	★★★★☆	★★★★☆	★★★★☆	★★★★☆	● High
Metal Roofing / Standing Seam	★★★★★	★★★★☆	★★★★☆	★★★★☆	★★★★☆	● High
Slate Roofs	☆☆☆☆☆	☆☆☆☆☆	★★★★☆	★★★★☆	★★★★★	● Not Worthwhile
Clay Roof Tiles	★★★★☆	★★★★☆	★★★★☆	★★★★☆	★★★★☆	● Medium
Rainwater Systems / Gutters	★★★★★	★★★★★	★★★★★	★★★★★	★★★☆☆	● High
Insulation (EPS, XPS, Mineral Wool)	★★★★★	★★★★☆	★★★★★	★★★★☆	★★☆☆☆	● High
PIR Insulation	★★☆☆☆	☆☆☆☆☆	★★★★☆	★★★★☆	★★★★★	● Not Worthwhile
Bathrooms & Sanitaryware	★★★★★	★★★★☆	★★★★☆	★★★★☆	★★☆☆☆	● High
Tiles & Adhesives	★★★★☆	★★★★☆	★★★★☆	★★★★☆	★★★★☆	● High
Laminate & Vinyl Flooring	★★★★☆	★★★★☆	★★★★☆	★★★★☆	★★☆☆☆	● Medium
Lighting & Electrical Fittings	★★★★☆	★★★★☆	★★☆☆☆	★★☆☆☆	★★★★☆	● Low-Medium
Furniture & Interiors	★★★★☆	★★★★☆	★★★★☆	★★★★☆	★★★★☆	● Medium-High
Fences & Metalwork	★★★★☆	★★★★☆	★★★★☆	★★★★☆	★★☆☆☆	● High
Balustrades / Glass & Metal	★★★★☆	★★★★☆	★★★★☆	★★★★☆	★★☆☆☆	● Medium-High
Paints & Primers	★★★★☆	★★★★★	★★★★★	★★★★★	★★★★☆	● Medium-High
Sealants & Foams	★★★★☆	★★★★★	★★★★★	★★★★★	★★☆☆☆	● Medium-High
Plasterboard & Cement Products	★★★★☆	☆☆☆☆☆	★★★★★	★★★★☆	★★★★★	● Low
Concrete Blocks / Bricks	☆☆☆☆☆	☆☆☆☆☆	★★★★★	★★★★★	★★★★☆	● Not Worthwhile
Timber Studs & Joists	★★☆☆☆	☆☆☆☆☆	★★★★★	★★★★★	★★★★★	● Low



Reading the Results

- ● High Potential → Clear advantage in price and delivery. Strong candidates for ImportFromPoland full service.
- ● Medium / Conditional → Savings depend on order volume or consolidation. Use Supersender or shared load.
- ● Low / Not Worthwhile → Minimal benefit after transport and risk. Better purchased locally.

Pro Tip:

*If the saving is less than **€2 per kg of shipped weight**, it's rarely worth the effort. Combine smaller items with high-value categories instead.*

How to Apply the Matrix

- **Plan backwards** — start with what's hard to find or overpriced locally.
- **Bundle categories** — combine 2–4 high-potential groups to maximise space utilisation.
- **Use Supersender** for medium-value goods or top-ups.
- **Buy local** for bulky, low-cost materials like plasterboard, PIR boards, or slate.
- **Revisit before each project phase** — market prices and exchange rates shift.

*The Smart Buying Matrix isn't a static table — it's a decision framework.
It helps you approach each category with clear expectations and confidence, balancing price, logistics, risk, and warranty before committing.*



It's crucial to optimise transport costs by using the full pallet height wherever possible. Maximising every cubic centimetre of available space can translate into savings of several hundred euros per delivery.



WINDOWS & DOORS

*All the knowledge you need to possess when considering windows
from Poland*

1. Introduction – The Most Technical Part of the Building Envelope

Windows and doors are among the most complex elements in any building.

They have to combine strength, insulation, ventilation, safety, and design — all in one precisely engineered product.

Every frame is a small system of profiles, hardware, gaskets and glass, and even a minor variation in those parts can change how it performs and how long it lasts.

Across Europe there are thousands of configuration options available — from traditional casement windows to advanced passive-house systems. Most modern windows share the same essential technology, but their **design logic** differs between regions.

- **uPVC (PVC-U)** systems dominate residential projects for their thermal performance and low maintenance.
- **Aluminium** is used for large openings, slim frames, or modern architecture.
- **Timber** remains a premium choice for heritage buildings and natural finishes.

Thanks to industrial standardisation, all three materials can now achieve similar insulation values and airtightness.

The main differences come down to cost, appearance, maintenance requirements, and weight, rather than basic performance.

2. Understanding Regional Differences

Why Windows Open Differently

One of the most visible contrasts between Irish/UK buildings and those in mainland Europe is the direction windows open.

In the **UK and Ireland**, windows traditionally open **outwards**.

This habit comes from practical weatherproofing: in windy or coastal climates, an outward-opening leaf is pushed against the frame by wind pressure, improving the seal.

When older, single-gasket designs were the norm, this small aerodynamic advantage made a real difference in preventing draughts and water ingress.

Across much of **continental Europe**, the opposite logic developed.

In warmer regions, the priority wasn't to keep the wind out — it was to keep the sun and heat away from the glass. External shutters provided that shading, but they could only be operated from inside if the windows opened inwards.

That climate-driven preference became a regional standard and evolved into the modern tilt-and-turn system, now common from Portugal to Poland and Germany.



Today, however, the functional gap between the two systems has disappeared.

Modern tilt-and-turn frames feature:

- multi-point locking on all sides,
- triple compression gaskets, and
- reinforced steel or aluminium cores inside the uPVC or timber frame.

They're just as stormproof as the best outward-opening systems, and usually offer better airtightness and security.

Choosing one over the other is now mostly a question of preference and familiarity, not performance.

Building Regulations and Safety Glass

Ireland and the UK follow the same core standards for safety glazing and escape routes — mainly **Part K (Protection from Falling, Collision and Impact)** and **Part B (Fire Safety)**.

Safety glass requirements (simplified):

- Any glazing **in a door** where the glass **starts below 1500mm** from floor level
- Any glazing below **800 mm from the floor**,
- or within **300 mm of a door edge**,
- must be made of **toughened or laminated safety glass**.

This is designed to prevent injury if someone falls or leans against the glass.

By contrast, most EU countries (including Poland, Germany and France) **do not** have such blanket requirements. Safety glass is only specified in critical areas like doors, balustrades, or public spaces. This means that when ordering from a supplier who doesn't understand Irish or UK regulations, the windows might arrive with **standard float glass** instead of safety glass — perfectly acceptable in Europe, but *non-compliant in Ireland*.

The result could be a failed building inspection or the need to replace entire glazing units later.

Tip: Always mark clearly on drawings which panes require safety glass. Even a brief written note on your quote request (e.g. "Safety glass in all panes below 800 mm") can prevent costly errors.

How to Check If the Glass Specification in Your Quote Is Correct

Before placing an order, always check the **glazing line in the quotation**.

Most window quotes list glass simply as a sequence of numbers or short abbreviations — e.g.

4 / 16Ar / 4 Thermofloat or 4 ESG / 16Ar / 33.1.

Understanding what those codes mean is the easiest way to avoid expensive mistakes later.

określenie złoto F4 (oliwka) wzrost: 2-skrzydłowy JOCKER kolor: Czarny rozmiar: Wkładka standardowa, rozstaw: 45/65 przejścia (przy otwarciu do 90°): 701 uszczelnienie: 1997	
Współczynnik termiczny	0,89 W/m²K
Współczynnik izolacji	Światło szyby: 586 x 864.50
Wypełnienie	4 th/UC18/4/UC18/4 th
Typ ramki	(UC) Ultimate Czarna (RAL 9005)
Grubość pakietu	48.0
Współczynnik Ug	0.50
Współczynnik G	0.53
Współczynnik Lt	0.73
Współczynnik Rw	33db
SHGC (Solar Heat Gain Coefficient)	0.46
Wymiary szklenia	616 x 894.50

Examples of glass specification descriptions

określenie złoto F4 (oliwka) wzrost: 2-skrzydłowy JOCKER kolor: Czarny rozmiar: Wkładka standardowa, rozstaw: 45/65 przejścia (przy otwarciu do 90°): 701 uszczelnienie: 1997	
Współczynnik termiczny	1,05 W/m²K
Współczynnik izolacji	Światło szyby: 567 x 1194.50
Wypełnienie	4 ESG/UC18/4 Satinovo matte/UC18/4 th ESG
Typ ramki	(UC) Ultimate Black (RAL 9005)
Grubość pakietu	48.0
Współczynnik Ug	0.90
Współczynnik G	0.59
Współczynnik Lt	0.73
Współczynnik Rw	33db
SHGC (Solar Heat Gain Coefficient)	9999.00
Wymiary szklenia	599 x 1225.50



3. Glass

Over 70% of a window's surface is glass, and it defines insulation, comfort and noise levels.

Modern units combine multiple panes, gas fills and coatings.

Understanding what those markings mean ensures you order the right performance — not just the right size.

3.1. Understand the Numbers and Symbols

The glass specification usually appears as something like:

4 / 16Ar / 4 → double glazing (two 4 mm panes, 16 mm argon-filled cavity)

4 / 18Ar / 4 / 18Ar / 4 → triple glazing (three panes, two 18 mm cavities)

If the panes include codes such as 33.1 or 44.2, that describes the laminated construction:

How to Read Glass Numbers and Symbols

Example of Glass Specification

4 / 16 / r / 4
Typical U=1.3 W/K

In a quote: "4 / 16Ar means two 4 mm panes separated by a 16 mm argonfilled cavity.

4 ESG / 18Ar / 4 / 18Ar
Typical U=0,7-0,9

If your quote lists aluminium spacers instead of "warm edge", performance will drop by 0,1-0,2 W/m² K

- A** ESG Tempered (toughened) glass
- B** VSG 33.1/44.2 Laminated safety glass
- T** Thermofloat / Planitherm
- A** Ar
- W** Warm edge

If the panes include codes such as 33.1 or 44.2, that describes the laminated construction:

Code	Structure	Typical Use
VSG / 33.1 / 44.2	Laminated glass with safety interlayer	Holds together when broken; used near floors and doors
33.1	Two 3 mm panes + 1 interlayer	Standard safety glass for doors / low panes
44.1	Two 4 mm panes + 1 interlayer	Larger panes
33.2	Two 3 mm panes + 2 interlayer	Higher security or sound control glass
ESG	Tempered / toughened glass	Harder to break. If damaged shatters safely into small pieces on impact
TMP / Thermofloat / Planitherm	Low-emissivity coated float glass	Improves thermal insulation; almost invisible coating facing inside cavity

So a triple-glazed safety unit might be written as:

- 4 ESG / 16Ar / 4 / 16Ar / 33.1
- 4 ESG / 16Ar / 4 / 16Ar / 4 ESG
- 33.1 / 16Ar / 4 / 16Ar / 33.1



3.2. Check for Coatings and Gas Fill

Good modern glazing should include:

- **Low-E coating** (can be marked as Thermofloat, TMP, Planitherm, or ClimaGuard).
- **Gas fill**: usually argon (Ar); krypton (Kr) is rare and costly.
- **Warm-edge spacer**: sometimes abbreviated SWISSPACER, TGI, or warm edge.

If a quote lists “**aluminium spacer**”, ask to change it — aluminium spacers cause edge condensation and reduce U-value performance.

3.3. What to Look for in the Glazing Specification

Once you know how to read the numbers, it's worth understanding what good glazing actually looks like — and which small differences have the biggest effect on comfort, performance, and compliance.

Glass Position and Coatings

Every pane in a glazing unit serves a different role:

- In **double glazing**, the **outer pane** should always be **low-emissivity (low-E) coated** — typically listed as TMP, Thermofloat, or Planitherm.
 - The inner pane should be standard float glass.
- In **triple glazing**, both the **outer** and **inner panes** are coated (TMP), while the middle pane is a standard float glass.

This configuration maximises insulation while preventing excessive solar gain.

Best practical setup:

4 TMP / 18 Ar / 4 / 18 Ar / 4 TMP

delivers a Ug-value of 0.5 W/m²K, which is as low as it gets with argon-filled glazing.

(Further improvement is only possible using krypton gas, which is costly and rarely justified in typical homes.)

Tempered vs Laminated Glass

Both meet safety requirements but perform differently.

- **Tempered (ESG)** glass is **heat-treated** so it shatters into small blunt pieces instead of sharp shards.
- It's lighter, more affordable, and widely used for safety glass upgrades — especially in opening sashes and small panes.
- **Laminated (VSG)** glass consists of two panes bonded with one or more plastic interlayers (e.g. 33.1, 44.2). When broken, it holds together, preventing penetration or injury. It also improves sound insulation and UV filtering.

If you'd prefer laminated glass in certain areas — for example, **balcony doors, floor-to-ceiling windows, or children's rooms** — you must specify it clearly in your quote request.

Most suppliers will otherwise default to tempered ESG because it's lighter and cheaper.



Glass Thickness and Large Units

The standard pane thickness in most residential glazing is **4 mm**, but that's not always sufficient for larger units.

- When a glazing unit exceeds **3.6 m²**, most manufacturers automatically upgrade the **outer and inner panes to 6 mm glass**.
 - This increases rigidity, reduces bowing under pressure, and keeps the glass stable under temperature changes.
- It's also recommended to use **thicker** glass on **wind-exposed elevations** (e.g. coastal or hilltop houses).
 - A slightly heavier unit makes a big difference to comfort — no flexing or vibration sounds during storms.

Tip: *If your building is in a coastal or high-wind zone, note that on the quote request. Manufacturers can reinforce frames or use asymmetric glazing to balance pressure and noise.*

Frosted and Decorative Glass

In modern triple-glazed units, **decorative or frosted glass** is almost always placed in the **middle pane**. Both the inner and outer panes remain smooth and clear to simplify cleaning and improve durability of coatings.

This way, the design layer doesn't interfere with low-E performance or sealing.

3.4. Condensation and Glass Defects

Condensation is one of the most misunderstood topics when it comes to modern windows.

Many clients assume that any moisture or misting means something is wrong, but in reality, **only one type of condensation indicates a fault**.

Understanding the difference saves unnecessary worry and helps identify when a genuine warranty claim exists.

Types of condensation

Where it appears	Likely cause	What it means/ what to do
On the room-side surface (inside pane)	High indoor humidity (e.g. cooking, drying clothes, showers)	Normal - reduce moisture, increase ventilation or extraction
On the outer surface (outside pane)	Very efficient glazing surface stays cold while air is humid	Normal - proves good insulation; usually disappears by mid-morning
Between the panes (inside the sealed unit)	Seal failure or damaged spacer	Fault - glazing unit lost airtight seal and must be replaced



Why It Happens

Condensation forms whenever warm, moist air meets a cold surface.

Modern **triple-glazed** windows are so thermally efficient that the outer glass can stay colder than the surrounding air — leading to morning dew on the outside.

That's a sign of **excellent insulation**, not a problem.

By contrast, moisture **between panes** shows that the sealed unit is no longer airtight.

The argon gas has escaped, allowing humid air in. Over time, the internal silica gel in the spacer becomes saturated, and misting appears permanently inside the cavity.

How to Recognise a Failed Unit

Typical signs include:

- Persistent mist or “milky” haze that doesn't clear during the day.
- Streaks or droplets inside the cavity that can't be wiped off.
- In advanced cases, visible dirt or dust trapped between the panes.

If you can touch both sides of the glass and the condensation remains in the middle, the seal has failed. The frame itself is usually fine — only the sealed glass unit needs to be replaced.

All reputable glass producers guarantee the **airtightness of sealed units for 5 to 10 years**, depending on supplier.

Replacement is straightforward:

1. The faulty glazed unit is removed from the sash or frame.
2. A new sealed unit of the same size is installed.
3. The original frame and hardware remain untouched.

The process does not require replacing the entire window.

Tips for Ongoing Maintenance

- ✓ Keep the manufacturer label or order reference for each window (helps identify production batch).
- ✓ Wipe frames and seals a few times a year to keep gaskets flexible.
- ✓ Open each window periodically to keep hardware lubricated and avoid sticking.
- ✓ Avoid drilling or gluing blinds directly onto glazing beads — this can stress seals and void warranties.
- ✓ If you suspect a failed unit, take clear photos in daylight before contacting your supplier.

If You're Unsure:

A good rule of thumb — if condensation is inside the sealed cavity, it's a fault.

If it's on the glass surface, it's a physics effect.

If in doubt, take a photo and note the temperature and humidity before contacting the supplier.



3.5. Glass Specification Checklist – Before You Order

Use this checklist when reviewing your window quote or supplier offer. A few minutes of checking now can prevent costly replacements later.

✓ Glass Composition

- Each glazing unit lists **all panes and spacers** (e.g. 4 TMP / 18 Ar / 4 / 18 Ar / 4 TMP).
- If safety glazing is required (below 800 mm from floor or within 300 mm of a door edge), it's marked as **ESG** (tempered) or **VSG/33.1/44.2** (laminated).
- For triple glazing, both **outer and inner panes** have **low-E coatings** (TMP, Thermofloat, or Planitherm).
- Argon (Ar) is specified as the **gas fill** — krypton is optional, but not essential for typical use.

✓ Performance Details

- **Ug-value** (centre-of-glass thermal rating) is included — for triple glazing, expect **~0.5 W/m²K** with argon fill.
- **Warm-edge spacers** are listed (SWISSPACER, TGI, or “warm edge”).
 - ⚠ If the quote says “aluminium spacer”, request a change — aluminium causes edge condensation and higher U-values.
- No mention of “passive glass” without supporting data — this term is often marketing only.

✓ Safety and Durability

- For large units (over **3.6 m²**), **6 mm glass** is specified for inner and outer panes (not 4 mm).
- For **coastal** or **high-wind areas**, ask the supplier to confirm glass thickness and frame reinforcement.
- Decorative or frosted glass is correctly positioned in the **middle pane** for triple glazing.

✓ Supplier Confirmation

- Supplier understands **Irish and UK safety glazing regulations (Part K)**.
- Warranty on sealed units is **minimum 5 years**, ideally 10.
- You've requested confirmation that **argon fill** and **low-E coatings** are included in all insulated units.

*Ug-value shown in quotes only describes the centre of the glass (not the whole window).
The full window performance depends on frame design, spacers and installation.
A window with Ug = 0.5 but poor frame insulation can still perform worse than one with Ug = 0.7
and well-insulated profiles.
Always compare Uw (whole-window value) if available — it reflects what you actually get once
installed.*



4. Window Hardware and Operation

Hardware defines how a window functions and how easy it is to live with.

Even when two systems look identical from outside, the choice of hinges, handles and mullions can change how they open, seal and age over time.

Understanding these details helps you choose practical solutions rather than simply aesthetic ones.

4.1. Hinges – Visible or Hidden

Surface (visible) hinges are the traditional standard.

They're simple, strong, and allow a wide opening angle — often up to 180° if there's no obstructions. This is usually limited by window reveals sides to around 100-110°.

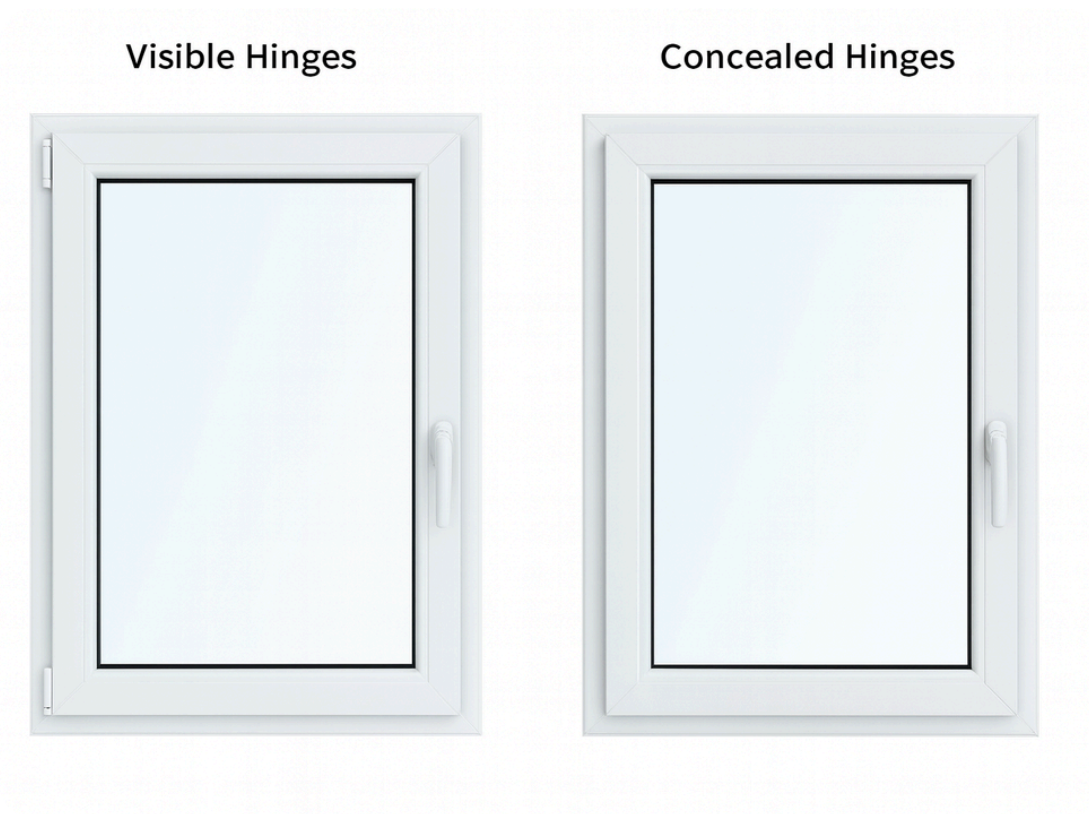
Visible hinges are also more forgiving during installation and easier to remove if a sash ever needs to come off the frame.

Hidden (concealed) hinges are fully integrated within the sash and frame, leaving clean lines and no visible metalwork when the window is closed.

They're now common in modern systems but have a few considerations:

- Most systems require a **minimum sash width** (usually around 600–650 mm) to fit the mechanism, so hidden hinges aren't suitable for very narrow windows.
- They typically open to **around 95°**, less than visible types.
- Removing or reinstalling the sash is a bit more complex, though any competent fitter can handle it with ease.

Tip: Hidden hinges are ideal for modern interiors and smooth façades, but visible hinges remain the more practical choice for large, heavy or frequently used windows.



4.2. How Tilt-and-Turn Hardware Works

A Dual-Function System — Ventilation and Safety in One

The **tilt-and-turn** window is the most popular system used across mainland Europe — and for good reason. It combines two functions in one mechanism:

1. Tilt (Ventilation Position):

When the handle is turned upward by 180°, the top edge of the sash tilts inwards by 10–15 cm. This allows continuous, draft-free airflow at ceiling height — perfect for safe night ventilation, even during rain.

2. Turn (Full Opening):

When the handle is turned horizontally, the sash opens fully inwards, providing wide access for cleaning and emergency escape.

This dual-action design is made possible by a precise **perimeter locking mechanism**: a continuous strip of hinges, rollers, and cams that run along the entire frame.

The system ensures **even pressure and sealing** across all four sides, far superior to traditional two-hinge outward casement designs.

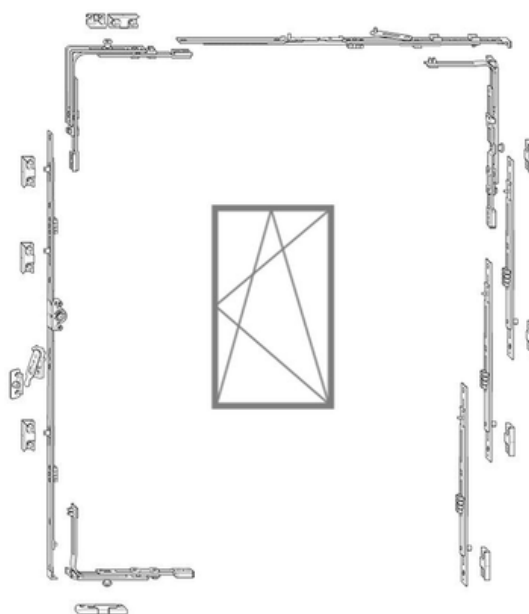
Why Tilted Windows Don't Leak

One of the most persistent myths about tilt-and-turn systems is that leaving a window open in the tilt position during rain will cause water to enter the room.

In reality, **the opposite is true** — the system is designed specifically to manage water flow.

Each tilt-and-turn sash includes:

- an internal **drainage channel** with weep holes leading to the outer side of the frame,
- a **compression gasket** system that seals on all sides except the upper hinge line (where controlled airflow occurs),
- and a **drip edge** on the sash that redirects rainwater away from the vent opening



As a result, any rain hitting the tilted sash runs down the outer face and drains safely through the system's external channels.

Only in extreme weather — heavy side winds driving rain at a specific angle — might occasional moisture appear, this can happen with any type window in such heavy conditions when left open.

Pro Tip:

Tilt ventilation works best when there's slight indoor-outdoor temperature difference. It allows humidity to escape without creating drafts — ideal for bedrooms and bathrooms.



Tilt-Only Windows

For small rooms, stairwells, or bathrooms, manufacturers also offer **tilt-only** versions of the same mechanism.

These are limited to the ventilation position and cannot open fully inwards, which:

- increases safety in upper floors or children's rooms,
- allows continuous airing without risk of accidental falls,
- simplifies maintenance since the hinge load is reduced.

Tilt-only frames use identical sealing and drainage systems, offering the same weather resistance and insulation as full tilt-and-turn units.

However, this version comes with several **limitations** that should be considered before specifying it:

1. No Emergency Exit Function

Because the sash cannot swing open, tilt-only windows **do not qualify as escape routes** under fire regulations.

If a window is intended to serve as an **egress opening** (for example in bedrooms, basements, or habitable loft spaces), local building codes usually require a **minimum clear opening height and width** that tilt-only models cannot provide.

2. Limited Cleaning Access

The inward tilt is too shallow to reach the exterior glass safely from inside. This makes maintenance difficult in multi-storey buildings unless external access is available.

3. Restricted Airflow Control

While ideal for background ventilation, the opening area is smaller compared to a tilt-and-turn sash. For rooms that depend on windows for air exchange, this may not be sufficient.

Micro-Ventilation — The “Third Position” You Shouldn’t Miss

Between the locked and tilted positions, most modern tilt-and-turn mechanisms include a **micro-ventilation mode** — sometimes called “night vent”.

It opens the sash just a few millimetres (usually 3–5 mm), allowing a **constant low-level airflow** without visually opening the window.

This position is achieved by turning the handle about **45° upwards**, where only a single cam disengages slightly from its striker plate.

The window remains secure and sealed against insects or rain, while still letting indoor humidity escape.

Micro-ventilation helps to:

- reduce condensation during colder months,
- maintain air exchange overnight,
- and prevent mould growth in well-insulated homes.



Minimum Widths — When Hidden Hinges Aren't an Option

Hidden hinges offer a sleek, minimalist look but require a **minimum sash width** to support their concealed geometry.

If the opening leaf is too narrow (typically under **600–650 mm**, depending on manufacturer), the hinge arms cannot open fully, and a surface-mounted hinge becomes the only practical solution.

Hinge Type	Typical Minimum Width	Maintenance	Aesthetic	Notes
Surface-mounted	~450 mm	Very easy	Visible	Classic option; strong and simple
Concealed / Hidden	~650 mm	Moderate	Invisible	Sleek finish; slightly more complex fitting

Removing or re-installing a tilt-and-turn sash with hidden hinges also takes slightly more precision — fitters must support the sash weight during hinge alignment — but **any experienced installer** can handle it without difficulty.

Tilt-Before-Turn – The Safer Upgrade

In standard systems, the handle sequence allows the sash to open fully when turned horizontally before tilting.

However, **tilt-before-turn (TBT)** hardware reverses this order — the first movement always activates the tilt function.

To open the window fully, the handle must be pressed inward against a safety spring or released with a key.

This configuration is widely used in schools, public buildings, and apartments for **child safety** and **controlled ventilation**. It's slightly more expensive (≈ €20–€40 extra per sash) but adds peace of mind where unrestricted openings could be risky.

Did You Know?

TBT systems include a small key or sometimes push-button lock on the handle, so even if someone tries to force it, the sash stays in ventilation mode.



Security Hardware Levels — How to Reach RC2 Standard

Modern window fittings can be configured for different security classes, from basic to **RC2 (Resistance Class 2)** — roughly equivalent to “**anti-burglary**” protection under EN 1627.

Security Level	Typical Features	Burglary Resistance	Use Case
Standard	2-3 locking points (mushroom cams + striker plates)	Basic	Ground floors with low risk
Enhanced (RC1N)	Reinforced cams and steel plates	Moderate	First-floor or protected sites
RC2	6-8 locking points with mushroom-head cams, anti-lift hinges, and reinforced strike plates	Resists manual break in for ≥3 minutes	Higher risk, accessible windows and doors

Upgrading to RC2 involves:

- high-strength steel strike plates anchored into the frame,
- mushroom-head locking bolts spaced around the entire perimeter,
- **anti-lift hinges** that prevent levering the sash out of its frame,
- and **lockable handles** (usually key or button type) rated for 100 Nm torque resistance.

These hardware upgrades typically add **€40–€80 per sash**, depending on size, but dramatically improve security without altering appearance.

Checklist – Before You Order Hardware

- **Confirm whether each window will be tilt-and-turn, tilt-only, or turn-only.**
- **Check sash width — narrow windows may require surface hinges.**
- **Choose between standard or hidden hinges depending on style and accessibility.**
- **Make sure micro-ventilation (night vent) is included in your system.**
- **Decide if you need tilt-before-turn safety logic.**
- **Specify RC2 hardware if extra security is required (especially on ground floors).**



4.3. Additional Hardware Features & Maintenance Tips

Window Restrictors and Safety Stays

For added safety or comfort control, windows can be fitted with opening restrictors or stays that limit how far the sash can open.

They are often used in upper-floor rooms, stairwells, and public buildings.

Two main types exist:

- Manual restrictors – released by pressing a button or lever; ideal for residential use.
- Automatic friction stays or brake arms – hold the sash open at any angle and release when the handle is moved.

These simple devices prevent damage from wind pressure, reduce impact on hinges, and add an extra layer of child safety.

Pro Tip:

If you expect frequent ventilation but windy conditions on site, ask for friction stays or brake arms to protect hinges and plaster reveals from sudden slamming.

Trickle Vents and Airflow Accessories

In modern airtight homes, background ventilation is crucial for healthy indoor air.

Trickle vents or slot ventilators can be integrated into the frame or sash to allow a controlled air exchange without opening the window.

While common in UK and Irish specifications, they are **not standard on Polish-made windows**, so they should be clearly requested during quoting.

These accessories are small, inexpensive, and can prevent condensation and humidity issues — especially in energy-efficient buildings where natural leakage is minimal. If your house is designed with a balanced MVHR system, trickle vents are usually neither required nor desirable – they can create unintended air paths and reduce the efficiency of heat recovery. Always follow your ventilation designer's specification.

Adjustment and Maintenance — Avoid the “Winter/Summer” Myth

Every quality window system includes basic adjustment points on the hinges and locking cams, used to fine-tune sash alignment or pressure on the gasket.

However, one of the most widespread misconceptions is the so-called “winter/summer” adjustment.

Properly manufactured and installed windows **do not require seasonal pressure changes**.

A well-set sash maintains even compression throughout the year, ensuring consistent airtightness and mechanical stability.

Forcing a tighter “winter” setting may:

- overload hinges and locking mechanisms,
- compress gaskets excessively, reducing their lifespan,
- and limit future adjustment range when genuine wear occurs after years of use.



Routine maintenance should be limited to:

- lightly lubricating moving parts once a year,
- keeping gaskets clean and flexible with silicone-safe products,
- checking visible screws and hinge pins for tightness.

When done correctly, a well-made and properly adjusted window can operate flawlessly **for many years without further regulation.**



Important!:

*Do not adjust hardware unless necessary.
High-quality PVC, timber, and aluminium windows are designed to
stay correctly sealed year-round.
If the window closes smoothly and seals evenly, leave it as is —
unnecessary “tuning” often causes more harm than benefit.*

Frame Performance — What Determines Window Stability

Beyond hardware and glazing, a window's long-term performance depends heavily on **frame stiffness** and the material used.

Each system — PVC, aluminium or timber — behaves differently under load, temperature fluctuations, and glass weight.

PVC Frames

PVC offers excellent thermal performance and is the most cost-effective option, but relies on **internal reinforcements** for structural stability.

These may include:

- **galvanised steel** reinforcements
- composite or **fibre** reinforcements
- multi-chamber profiles increasing stiffness and insulation

Large PVC sashes (especially tilt-and-turn) require proper reinforcement to avoid:

- long-term sash drop,
- difficulty closing after seasonal temperature changes,
- excessive flex when the tilt mechanism is engaged.

Pro Tip:

Always confirm with the supplier that steel reinforcement is included in both frame and sash — some budget systems skip it or reduce thickness to save cost.

Aluminium Frames

Aluminium is inherently rigid, stable and ideal for large openings.

Thermal insulation depends on the quality and width of the **thermal break** inside the profile.

Modern aluminium systems from Poland typically include multi-chamber polyamide breaks and foam inserts but differ widely in performance.

Large glass weights are easily supported, and sash drop is extremely rare — making aluminium first choice for tall, heavy doors and sliding systems.



Timber Frames

Timber windows offer natural rigidity and excellent insulation, but performance varies by wood type:

- **Pine/spruce** – lightweight, stable, cost-effective
- **Meranti** – denser, resistant to moisture
- **Oak** – extremely rigid but heavy
- **Alu-clad timber** – premium option combining both strength and weather resistance

A well-made timber window remains stable for decades, provided it receives basic maintenance.

Installation & Airtightness Basics — The Critical Final Step

Installation & Airtightness — What Really Matters

Window performance depends not only on the product itself but also on how it's connected to the wall. There are several installation methods used across Europe, and **all of them can work well when done correctly**.

While modern building standards favour layered, airtight installations, the traditional **foam-only installation** remains common in Ireland — and when executed properly and protected by plaster/render, it still performs acceptably in many cases.

The key is not the specific product (foam vs tape), but whether the **installation prevents water ingress, uncontrolled air leakage, and thermal bridging**.

Foam-Only Installation — Still Common, and Often Fine

Expanding PU foam provides:

- thermal insulation of the perimeter gap,
- acoustic dampening,
- some bonding strength.

In Irish construction, especially with **cavity walls**, foam-only installations have been used for decades with good real-world results, *provided that*:

- the foam is fully covered by internal plaster or airtight finishing,
- the external side is sealed against wind-driven rain (silicone, render, or tape),
- the window is mechanically secured (fixing straps or frame anchors).

Important:

Foam itself is not the airtight layer — airtightness must come from the internal finish (plaster, airtight paint, acrylic sealant, or an internal tape).

When the internal side is properly sealed, the installation does not rely on foam for airtightness.



Layered or “Tape-Assisted” Installation — Recommended, but not mandatory

Across continental Europe, especially in low-energy buildings, windows are installed using the **three-layer principle**:

1. **External layer**: watertight but vapour permeable
2. **Middle layer**: insulation (foam/mineral wool)
3. **Internal layer**: airtight and vapour-tight

This protects the foam long-term and ensures predictable airtightness — but in cavity-wall houses it's often adapted rather than strictly followed, because the cavity itself acts as a drainage and ventilation zone.

How layered installation is adapted in Ireland

Fitters often apply:

- **external tape or sealant** on the outside face,
- **internal airtight tape** applied after the window is fitted — bonded to the front face of the frame and then sealed to the plaster.

This approach is different from Polish/German practice (where tapes are applied before the window enters the opening), but in cavity construction **it is still a valid and functional system**, because:

- the airtightness line runs on the internal plaster layer, not inside the wall,
- the window is usually aligned to the inner leaf,
- the external cavity closer and DPC already prevent moisture transfer.

When Is Tape Especially Beneficial?

Tapes are most beneficial when:

- the window is installed in **external insulation systems**,
- the building aims for **low-energy / BER A1-A2** standards,
- the opening is unusually irregular and relies heavily on foam,
- long-term airtightness is a design priority (tests / certification),
- external reveals are wide, creating temperature gradients at the joint.

For standard Irish cavity-wall homes, a good foam installation **with correct sealing** on both sides is usually enough for solid long-term performance.

Common Installation Mistakes — More Important Than the Method

- foam left exposed internally (no airtight layer applied),
- silicone used internally instead of externally,
- incorrect packers causing frame distortion,
- inconsistent frame screws/straps placement,
- installing too close to the cold outer leaf (increasing condensation risk),
- no sealing between sill and frame.



5. External & Internal Doors

Although doors are built on the same profile systems as windows, their construction is much more robust. A door is used far more frequently, carries greater loads, and must remain secure, stable and weather-tight despite constant movement. This is why door profiles are thicker, reinforcements heavier, and hinges and locking mechanisms engineered to a higher standard than those used in window sashes.

External doors must also cope with full exposure to wind, rain and temperature changes, while internal doors prioritise ease of use, sound control and appearance. In the following sections, I focus on the key technical elements — thresholds, locks, hinges, sealing and installation — so you can specify doors that remain reliable and comfortable to use for many years.

5.1. Threshold Options

Every external door relies on its threshold for weather protection, airtightness and durability. In modern Polish PVC and aluminium systems, the threshold is not an afterthought but a structural, thermally broken component designed to maintain stability and sealing for years of daily use. Choosing the right configuration — and especially the correct support under the threshold — has far greater impact on performance than the threshold height itself.

Standard System Thresholds

In European systems, the “standard” threshold is a **low, thermally broken threshold** with a typical visible height of **20–24 mm**, like the examples shown below.

Despite being low, these thresholds provide:

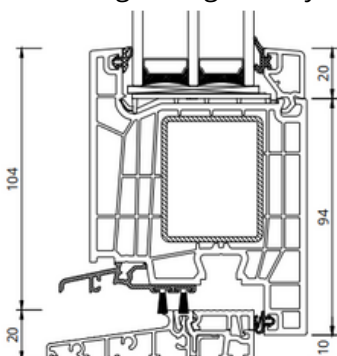
- full thermal break between interior and exterior,
- multi-point sealing (gaskets),
- strong mechanical support for the door leaf,
- compatibility with Part M-friendly floor transitions,
- excellent weather resistance when correctly installed.

This design is standard in most modern Polish profiles (PVC and aluminium).

It is *not* the same as the 60–70 mm high thresholds often seen in older British and Irish systems. Those are considered outdated and are generally not used in new doors in mainland Europe.

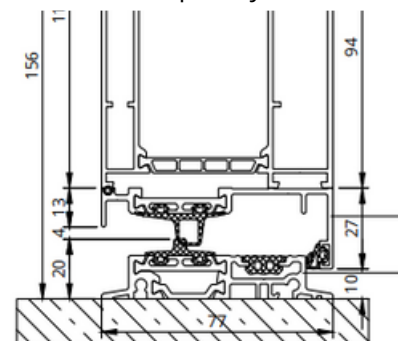
Why these thresholds work so well

- The thermal break prevents condensation and cold spots.
- Their low height makes transitions comfortable without compromising sealing.
- The integrated gasket system maintains contact pressure even when the door is frequently used.



*Left: Cross - section drawing of an inwards-opening **upvc** door*

*Right: Cross -section drawing of an inward opening **aluminium** door*



The Critical Part Most People Miss: What's Under the Threshold

Even the best threshold will underperform if installed on a cold or unstable substrate.

A traditional concrete screed or uninsulated slab edge can create a **large thermal bridge** directly under the door, often causing:

- cold floor edges,
- condensation in winter,
- reduced airtightness,
- difficulties maintaining correct door alignment in the long term.

Best practice support options

To avoid these issues, I strongly recommend one of the following:

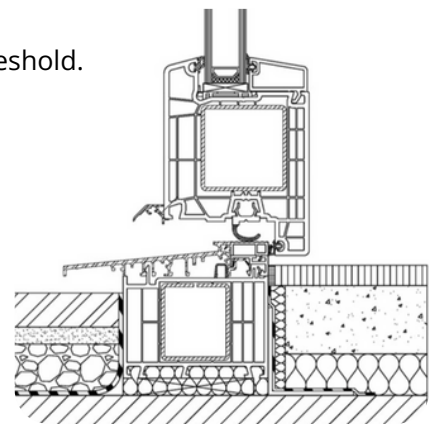
1. System Extension Under the Threshold (PVC/ALU profile)

A factory-made, thermally broken extension installed directly below the threshold.

Benefits:

- identical material and thermal properties,
- full mechanical stability,
- consistent screw anchoring points,
- no risk of compression or movement.

This is the optimal solution for most doors.



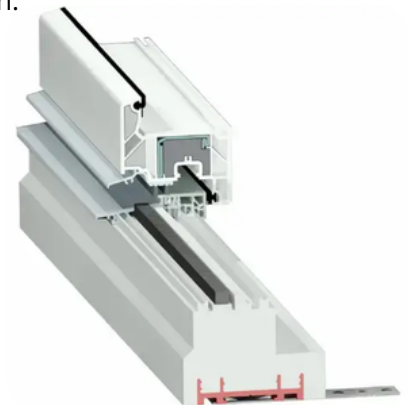
2. Structural XPS Door Sill Support (podwalina XPS)

A high-density, load-bearing XPS block designed for passive house installation.

Widely used in Germany and Poland, it provides:

- full thermal insulation,
- resistance to compression,
- ability to shape levels and transitions,
- stable support across the entire door width.

It also works well for doors installed closer to the insulation layer.



Poor practice (to avoid)

- placing the threshold directly on raw screed,
- using standard EPS that compresses,
- leaving gaps under the threshold filled only with foam,
- mixing materials (wood shims + screed + bits of insulation).

These shortcuts almost always lead to cold spots and sealing problems.



Drop-Down Thresholds (Automatic Drop Seals)

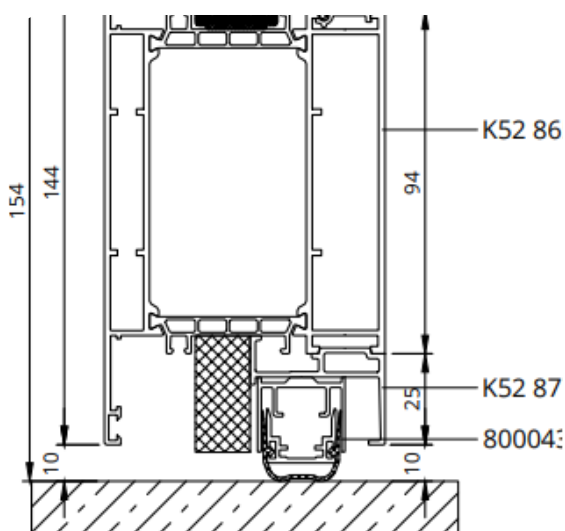
These are mechanisms built into the bottom of the door leaf, where a gasket drops down when the door closes and retracts when the handle is pressed.

Although common in internal acoustic/fire doors, they are **not recommended** for external residential doors.

Drawbacks:

- significantly lower weather-tightness,
- small debris can block the sliding gasket,
- complex mechanisms prone to wear,
- difficult and costly repairs,
- weak acoustic and thermal performance compared to a system threshold.

You may occasionally see them marketed as “easy-access solutions”, but they are only suitable for internal doors or highly specialised applications.



Practical Recommendations

For main entrance doors

- Use the **standard system threshold (20–24 mm)** — it provides full sealing, thermal break and reliable long-term performance.
- Always include **a system extension** under the threshold or a **structural XPS** (“podwalina”) to eliminate thermal bridges and ensure proper support.
- Drop-down seals and flush / zero thresholds are not suitable for external doors.

For highly exposed elevations

- Keep the standard system low threshold — it provides the highest resistance to wind-driven rain when correctly installed.
- Use additional exterior detailing where needed (e.g., drip flashing, properly sloped paving, extended sill)



5.2. Locking & Security

The locking system determines how well a door seals, how secure it is, and how easy it is to use every day. Although all modern European doors use multi-point locking, the type of mechanism changes how the door behaves when closing and how it maintains pressure on gaskets over time.

3-Point Locking System (standard in most doors)

A 3-point lock has one central latch/bolt operated by the handle and **two additional locking points** (usually hooks or bolts) at the top and bottom.

How it works

- When you lift the handle, all locking points engage simultaneously.
- Turning the key blocks or unlocks the mechanism
- The compression on the gaskets is consistent and keeps the leaf aligned.

Pros

- Reliable and simple construction.
- Easy to maintain.
- Ideal for standard-size doors and moderate exposure.
- Works with most cylinders (incl. high-security types).

Considerations

- Requires lifting the handle to lock — some users forget to do this.
- Provides good locking pressure, but not as strong or even as the 5-point system.



5-Point Locking System

A 5-point system has two additional hooks/bolts compared to the 3-point version, giving a total of five locking points along the door height.

How it works

- Lifting the handle engages all five points.
- The hooks pull the leaf tighter into the frame compared to a 3-point system.
- Closing pressure is distributed more evenly — extremely important for tall or wide aluminium doors.

Pros

- Better resistance to bending and twisting of the leaf.
- Improved wind-tightness and acoustic sealing.
- Stronger burglary resistance (more points = harder to pry open).

Considerations

- Slightly higher cost
- Still requires handle-lifting for locking.



GU Secury Automatic (ZA3_GU) — Automatic Multi-Point Lock

This is one of the best modern locking systems available.

Unlike standard locks, **it locks automatically when the door closes** — no need to lift the handle.

How it works

- The latch senses door contact and **automatically throws two independent locking bolts**.
- When the door clicks shut, it is **fully multi-point locked without touching the handle or key**.
- The key is only needed to deadbolt/undeadbolt from outside.

Pros

- Perfect for households where people forget to lift the handle.
- Consistent gasket pressure every time — excellent for airtight, wind-exposed or tall doors.
- Much better long-term stability, especially on aluminium.

Considerations

- When using smart-access systems, the lock must be compatible with the motorised cylinder used.
 - Slightly more sensitive to installation accuracy than traditional locks.
-

SIEGENIA AS3600 — Day/Night Automatic Lock (Z3DN_SIE)

This system is similar to GU Automatic but adds a day/night function.

How it works

- During day mode:
 - the door latches automatically but can be opened from outside without a key (useful for short stepping out).
- During night mode:
 - it operates like a full automatic multi-point lock — secure and tightly sealed.
- Mode is adjusted by a small switch on the edge of the door leaf.

Pros

- Convenience for people frequently going in/out (e.g., garden access).
- Still provides strong sealing when switched to night mode.
- Great for homes with children or pets moving between inside and outside.

Considerations

- Users must understand how to switch modes — otherwise they may assume the door is locked/unlocked when it isn't.
- Not suited for locations requiring constant full security.



Electronic Access (PIN, Fingerprint, RFID) — What You Need To Know

Smart access doesn't replace the lock — **it replaces the cylinder**, and even then you can still use a physical key at any time.

The locking system (3-point, 5-point or automatic) stays exactly the same. Only the way you engage or disengage the lock changes.

How electronic cylinders work

- Electronic access adds extra ways to unlock the door:
 - PIN keypad,
 - fingerprint reader
 - RFID card/tag
 - phone app
 - or a combination

But **all good systems keep a physical keyhole** so the door can be unlocked either electronically **or** with a traditional key, depending on what the user prefers at any moment.

Important for daily use

- If the door uses a lift-handle system (3 or 5 point), you **still lift the handle manually**. Smart access only replaces the key-turn function.
- With GU Automatic, the door locks itself on closing — smart access simply unlocks it.
- If electronics fail (no power, battery empty, module fault), you always retain full access with the physical key.

Electrical preparation

Most systems require only:

- 🔌 **a single 230 V feed to the door frame** (usually hinge side)

No additional wiring inside the door leaf is needed.

Smart Lock Myths vs Reality

"If the smart lock fails, I won't be able to open the door."

Reality: Every good electronic cylinder still has a physical keyhole. If the battery dies or the reader fails, you simply open the door with the key. Smart access adds convenience — it never removes manual control.

"Smart locks require internet or Wi-Fi to work."

Reality: They work offline by default. PINs, fingerprints, RFID tags and manual keys operate without any internet connection. Online features (remote unlock, history logs) are optional.

"Smart locks are less secure than traditional keys."

Reality: Mechanical security still comes from the multi-point lock and the cylinder class. Electronic access only replaces the way you turn the cylinder. With a Class C (or high-security EN1303) cylinder, security is equal or better than with a normal key.

"If the smart lock fails, I'll be locked out."

Reality: Every good electronic cylinder still includes a traditional keyway. If the battery runs out or the module malfunctions, you simply unlock the door with the physical key. Smart access adds convenience — it never removes manual control.

"Electronic locks replace the handle-lift mechanism."

Reality: If your door uses a lift-handle lock (3- or 5-point), you still lift the handle manually. The smart lock only performs the key-turn function — the locking system itself remains unchanged.

"Smart locks are a gimmick and not suitable for main entrance doors."

Reality: The mechanical lock is the same — only the way you unlock it changes. Smart access is often more practical at the front door than anywhere else, especially for families, deliveries, trades or anyone who prefers keyless entry while keeping the physical key as a full backup.



5. Sash windows, roof windows, Doors, Sliding doors, Lift-and-slide, PSK,

Choosing a front door or a large sliding system is one of the most expensive and permanent decisions in any build — and also one of the easiest places to make costly mistakes.

In the full version of this guide, you'll gain a clear, practical understanding of how different door and sliding systems really work, so you can choose solutions that suit your **layout, lifestyle and budget**, not just what looks good in a showroom.

You'll learn how to:

- confidently choose the right **front door construction**, insulation level and threshold — and understand which upgrades genuinely improve comfort and security, and which ones are mostly cosmetic;
- compare **lift-and-slide (HST)** and **tilt-and-slide (PSK)** systems in real-world use, including space requirements, daily operation, sealing performance and long-term reliability;
- understand **threshold heights, drainage and accessibility implications**, and how small specification choices can affect comfort, water tightness and future compliance;
- recognise **common specification errors** that lead to drafts, water ingress, difficult operation or unnecessary cost — and how to avoid them before ordering.

The full edition goes beyond brochures and marketing descriptions, focusing instead on how **these systems behave once installed**, and what experienced builders and suppliers look for when specifying them correctly.

This section is designed to help you make informed, confident decisions — and avoid the most common and expensive mistakes made with doors and large glazed openings.



ROOFING, CLADDING & GUTTERS

Standing seam roofs and cladding, steel vs upvc gutters, clay roof tiles. Spoiler alert - SLATE? Much more expensive in Poland

What You'll Discover in the Full Edition

Roofing, cladding and guttering systems are long-term investments — and the differences between brands go far beyond price or appearance.

In the full version of this guide, you'll learn how to compare **leading Polish manufacturers** and suppliers based on what actually matters when buying: product range, durability, proven performance, availability and delivery timelines.

The full chapter will help you:

- understand the **strengths and limitations of major roofing and cladding brands**, not just their brochure claims;
- compare **standing seam systems, tiles and rainwater solutions** across different manufacturers and use cases;
- assess **longevity, warranties and market presence**, so you know which brands are established and which are short-term players;
- factor in **lead times, logistics and delivery options** — often the difference between a smooth build and costly delays;
- avoid common buyer mistakes caused by mixing incompatible systems or choosing products unsuited to Irish conditions.

Rather than promoting a single solution, this chapter is designed to give you the knowledge needed to **compare offers objectively**, ask the right questions, and make confident purchasing decisions.



INSULATION, RENDER, PLASTER

One of the most popular topics! PIR vs EPS | Metac vs Super Mata | Is it worth buying loft roll in Poland? | Silicone vs Silicate vs Lime render

What You'll Discover in the Full Edition

Insulation and render systems are one of the most confusing areas for buyers — full of strong opinions, half-truths and conflicting advice.

In the full version of this guide, you'll learn how to compare insulation and render systems objectively, based on performance, compatibility and real-world use — not marketing claims.

This chapter will help you:

- understand the real **differences between EPS and PIR insulation**, and where each makes sense in practice;
- compare **leading Polish insulation brands** in terms of quality, consistency and availability;
- assess whether **loft roll insulation** is worth sourcing from Poland, once transport and handling are considered;
- navigate the complexity of **ETICS systems** — adhesives, meshes, primers and renders — and why mixing brands can be risky;
- choose between **silicone, silicate and lime renders**, understanding durability, maintenance, colour stability and long-term appearance.

Rather than pushing one “best” solution, the full chapter focuses on **how to evaluate systems as a buyer** — taking into account technical performance, logistics, lead times and total cost.

The complete section is designed to help you avoid expensive insulation mistakes and choose systems that actually work together — on site and long after completion.



BATHROOMS & SANITARYWARE

Brands and suppliers reviews | Fixtures and finishes | Logistics considerations

What You'll Discover in the Full Edition

Bathroomware has long been one of the most popular product categories sourced from Poland to Ireland — and for good reason. The market offers an exceptionally wide range of suppliers, styles and price points, but the differences between them go far beyond appearance.

In the full version of this guide, you'll gain insight based on **years of hands-on experience sourcing bathroom products**, including real feedback from repeated orders and long-term cooperation with Polish manufacturers and suppliers.

You'll learn:

- which bathroomware suppliers consistently deliver **accurate orders and reliable quality**;
- how different brands compare in terms of **finish durability, consistency and real-world performance**;
- which manufacturers are easiest to work with when it comes to **logistics, packing and delivery**;
- where warranty claims are rare — and where problems tend to arise.

Armed with this knowledge, you'll be able to **shortlist trusted suppliers**, avoid costly mistakes, and choose bathroom products with confidence — based on proven performance, not just catalogue images.



TILES, FLOORING & FINISHES

Tiles from Spain or Poland? What adhesive should you use? 8,10 or 12mm laminate flooring? SPC/LVT flooring. Engineered wood flooring from Poland

What You'll Discover in the Full Edition

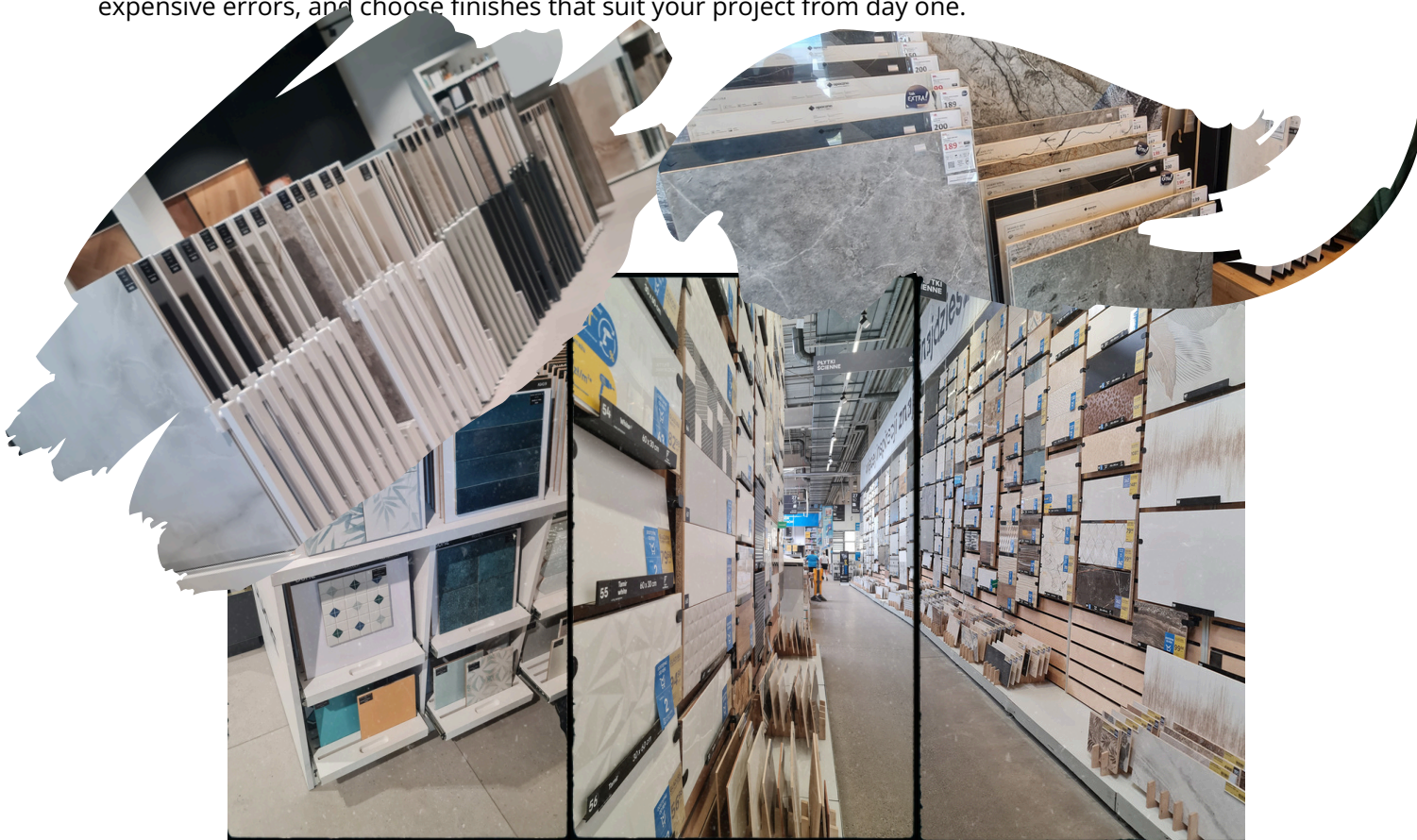
Tiles, flooring and finishing materials are some of the most visible elements of any interior — but also some of the easiest areas to overspend or specify incorrectly.

In the full version of this guide, you'll learn how to compare **tiles and flooring from Poland and Southern Europe** from a buyer's perspective — focusing on quality, consistency, availability and suitability for Irish conditions.

This chapter will help you:

- understand the real differences between tiles **from Spain and Poland**, including quality control, sizing tolerances and batch consistency;
- choose the **right adhesives and installation systems**, and avoid common mistakes when pairing tiles with underfloor heating or different substrates;
- compare **laminate flooring thicknesses (8, 10, 12 mm)** and understand when thicker really makes sense — and when it doesn't;
- navigate **SPC and LVT flooring** options, including wear layers, click systems and acoustic performance;
- assess **engineered wood flooring from Poland**, including construction, finishes and long-term durability.

The goal of this chapter is simple: to help you compare offers like a professional buyer, avoid the most expensive errors, and choose finishes that suit your project from day one.



FURNITURE, INTERIORS & LIGHTING

Poland is one of Europe's main furniture manufacturer. Find out how to navigate this vast market, where to find best deals and which places are best to avoid.

What You'll Discover in the Full Edition

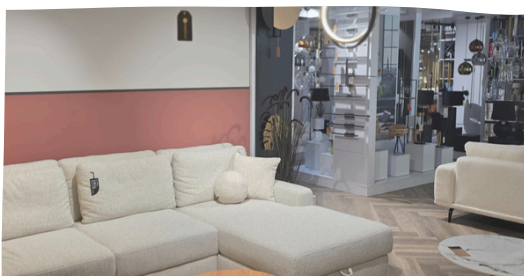
Poland is one of Europe's largest furniture manufacturing hubs, offering everything from mass-market ranges to highly specialised interior solutions.

For buyers, the challenge isn't availability — it's knowing **where to look, how to compare offers, and which routes make sense depending on budget, lead time and logistics.**

In the full version of this guide, you'll learn how to navigate the Polish furniture and interiors market as an informed buyer, including:

- how to distinguish between **mass-produced, semi-custom and made-to-measure furniture**, and when each option is appropriate;
- where to **find reliable suppliers and retail formats**, and which channels are better avoided for export purchases;
- how to assess **lead times, packaging standards and transport suitability**, especially for bulky or fragile items;
- what to consider when sourcing **lighting and electrical fittings**, including compatibility, certification and installation considerations.

This chapter is designed to help you make structured, realistic decisions — avoiding impulse purchases and choosing suppliers that fit your project scope and logistics plan.



FENCES, GATES & METALWORK

Metal fences, Bespoke and standard gates and balustrades. Made to order steel stair structures - those are just the few examples that Poland is known for across Europe.

What You'll Discover in the Full Edition

Poland is widely recognised across Europe for its metal fabrication capabilities — from standard fencing systems to fully bespoke steel structures.

For buyers, the key challenge is understanding what can be reliably ordered to specification, how to compare offers, and where risks typically arise.

In the full version of this guide, you'll learn how to approach fences, gates and metalwork as an informed buyer, including:

- how to compare **standard vs bespoke metalwork**, and understand where custom fabrication makes sense — and where it doesn't;
- what to check in **drawings, measurements and tolerances** before approving production;
- how finishes (galvanising, powder coating, duplex systems) affect **price, lead times and maintenance expectations**;
- what to consider when ordering **gates, balustrades, stairs** or other steel, especially in terms of transport, handling and site readiness;
- common issues related to **logistics, packing and delivery** of heavy or oversized metal elements.

This chapter focuses on helping you ask the right questions before ordering, understand how offers are structured, and avoid the most common and costly mistakes made with fabricated metal products.



IMPORTFROMPOLAND APP EXPLAINED — YOUR INSTANT QUOTE SYSTEM

Fast, transparent, and designed for self-builders and professionals alike.

When sourcing from abroad, price transparency matters most.

That's why ImportFromPoland developed a custom quote form and mobile app — giving you a clear, all-inclusive EUR price in seconds.

No hidden costs. No currency guessing. No need to add VAT or calculate delivery later. Every quote already includes everything from product cost to insured delivery.

1. Create Your Account

- **Sign up** and add your **Name** (required)
- Add **invoice address** and **contact details** now or later in **Settings** (you can complete these before your first order is confirmed).

2. Start a new basket (order)

- Go to **Orders** → click **Create New Order**.
- Name the basket so it's easy to track (e.g., "Bathrooms – Oct", "Kitchen – week 42", "Upstairs flooring").
- You can keep **multiple baskets open** at the same time.

3. Add items from Polish stores

For each product:

- **Paste product name** from the supplier's website.
- **Paste the product URL.**
- **Enter the store price in PLN.**
 - Under the field you'll instantly see the **final, delivered price in EUR** (includes delivery, VAT, insurance, service, currency).
- **Enter quantity** and choose **unit**.
- Repeat for each item you want in this basket.

Save Draft any time — you can add/remove items later.



4. Review & Submit

When your basket looks right:

- Click **Save Draft** (one last time) → review links, prices, units, and quantities.
- Click **Submit Order**.

You'll see your order in **Orders** with status **Submitted**.

#	Product	Unit Price (EUR)	Qty	Total (EUR)
1	PRODUCT NAME View Product	€161.29	1 pcs	€161.29
2	Głazura Ventura Ivory 32,8 x 89,8 cm View Product	€143.23	5 pcs	€716.13
3	Grunt gębokop penetrujący Atlas Uni-Grunt 10 kg View Product	€20.97	8 pcs	€167.74

Order Timeline
Order Received Pending
Order Confirmed Pending
Payment Received Pending
Order Complete Pending
Order Dispatched Pending

Order Info
Order Number Not assigned
Created 26 Oct 2025
Basket Sum
Subtotal (excl. VAT)
VAT:
Grand Total

5. Admin check (within 24h, Mon–Fri)

Our team reviews your submission (links, prices, units, quantities, address).

- If anything needs clarification, we'll message you
- If all good, we **Confirm** the order and email you the **Order Confirmation Document** with:
 - Items and quantities
 - Delivery address
 - Prices & total in EUR
 - **Payment details**

Start by creating a new order to add items to your basket.

[Create New Order](#)

CONFIRMED


€1,045.17

Promo note: Some stores run **time-limited promotions**. We confirm orders as fast as possible, but if a promo changes **before** we can confirm, we can't honour the old price.

Tip: Submit promo baskets **3–4 days before** the promotion ends.

6. Payment & Preparation

- Once payment is received, your status changes to **Paid** and we begin **completing** the order.
- **In-stock** items typically take **up to 1 week** for us to gather and prepare.
- **Bespoke items** (windows/doors, standing seam roofing, guttering packages, glass balustrades) are quoted individually and include **lead time** on the quote.



← Back

013/10/2025

Private Client

Order Items

#	Product	Unit Price (EUR)	Qty	Total (EUR)
1	PRODUCT NAME View Product	€161.29	1 pcs	€161.29
2	Głazura Ventura Ivory 32,8 x 89,8 cm View Product	€143.23	5 pcs	€716.13
3	Grunt gębokop penetrujący Atlas Uni-Grunt 10 kg View Product	€20.97	8 pcs	€167.74

Order Timeline

- Order Received

26 Oct 2025
- Order Confirmed

Completed
- Payment Received

26 Oct 2025
- Order Complete

Pending
- Order Dispatched

Pending

7. Dispatch & Delivery

- When everything in the basket is ready, status updates to **Ready to Send**.
- Your order is planned for the **nearest Thursday departure** from Poland.
- After **Dispatch**, the status updates again.
- **Estimated delivery day** appears around **Monday** once the lorry reaches Ireland.
- Typical delivery window: **Tuesday–Friday** the following week.

1

Castorama

[View Product](#)

3

Grunt głęboko penetrujący Atlas Uni-Grunt 10 kg

Castorama

[View Product](#)

Order Timeline

Order Received

26 Oct 2025

Order Confirmed

Completed

Payment Received

26 Oct 2025

Order Complete

Completed

Order Dispatched

26 Oct 2025

Planned Delivery

29 Oct 2025



Products that require a bespoke quote

Some items need a tailored approach (measurements, components, finishes). You'll receive a custom quote (usually within **24-48h**) with **lead time shown**:

- **Windows & doors** (uPVC, aluminium, timber)
- **Standing seam roofing** systems
- **Guttering** & roof accessories packages
- **Glass balustrades** and custom metalwork
- **Plasterboard**
- **Insulation** (EPS, mineral wool)\
- **Bricks, paving** etc

All bespoke quotes are still **all-inclusive in EUR**.

Small checks that save time

- ✓ Links open correctly and match product names
- ✓ Units: pcs / m² / box chosen correctly
- ✓ Tile/flooring: full box multiples
- ✓ Delivery address and contact phone are up to date
- ✓ Promo orders submitted 3-4 days before promo end

PRO TIPS — TILES & FLOORING QUANTITIES

Avoid shortfalls, colour shade issues, and delays.

- Order in full box multiples. If a box is 1.44 m² and you need 12 m² → 9 boxes (12.96 m²).
- Add 5-10% waste for straight layouts; 10-15% for herringbone/diagonals.
- Check calibre/shade codes match if mixing stores or batches.
- For stairs or edges, list trim profiles (lengths in lm – linear metres).
- Not sure? Add a note in comments — we'll verify before confirmation.



SUPERSENDER APP EXPLAINED — MAXIMISE YOUR SAVINGS AND GO DIRECT

Skip all middle men and achieve the highest savings potential!

When sourcing directly from Polish stores, coordination and documentation become the biggest challenge — not the buying itself.

The Supersender app was designed to make that process simple: one place to register your deliveries, track what's arrived, and prepare your consolidated shipment to Ireland.

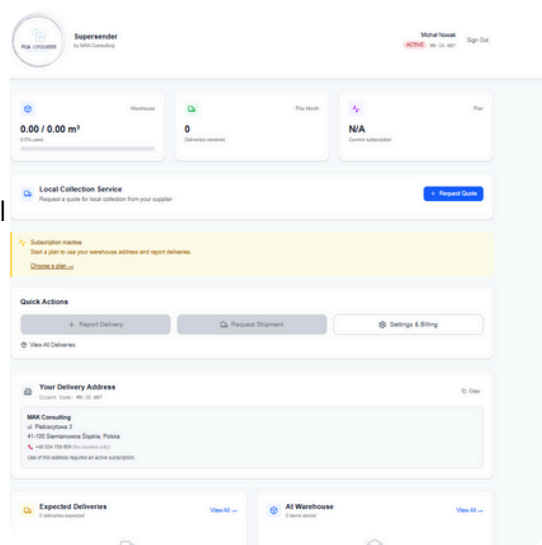
No guesswork. No messy spreadsheets. No chasing multiple parcel numbers across different suppliers.

You log your deliveries, we consolidate them, and your goods travel on the next available Ireland-bound load.

1. Create Your Account

- Sign up by selecting your country and account type (individual or company).
- Enter your contact details and set a password.
- Accept the Terms & Conditions and Privacy Policy.

Once registered, you can log in immediately and access your dashboard.



2. Choose Your Subscription Plan

To activate your warehouse address and start reporting deliveries, you need an active plan.

- Select the plan that best matches your expected number of deliveries and storage needs.
- Choose the subscription length — longer subscriptions are discounted.
- Select the start date (immediate or scheduled within the next 14 days).

After completing the purchase:

- your account is activated instantly;
- payment details are sent to the email address used during registration.

Important:

If payment is not received within 5 working days, the account may be temporarily deactivated until payment is completed.



Registering Incoming Orders

Option A — Reporting a Supplier Delivery

Use this option when the supplier delivers directly to the Supersender warehouse using your assigned delivery address.

Steps:

1. Click **Report Delivery** on the dashboard.
2. Enter the supplier name.
3. Add a brief description of the goods.
4. Enter the supplier order number (optional).
5. Add your own internal reference (recommended for tracking multiple orders).
6. Submit the delivery.

What happens next:

1. Once the delivery arrives, the warehouse measures the pallet or packages.
2. Actual dimensions and weight are entered into the system.
3. Your used storage space updates automatically.
4. The delivery status changes from **Expected** to **Received**.
5. The order appears in the **At Warehouse** section of your dashboard.

Option B — Local Collection Service

If the supplier does not deliver, you can request a local pickup.

Collection limits:

- up to 1.2 tonnes,
- up to 4.8 m length,
- within 100 km of the warehouse.

Steps:

1. Click Request Quote under Local Collection Service.
2. Enter approximate dimensions or a description of the items.
3. Provide the pickup address and any additional notes.
4. Submit the request.

After submission:

- Our office prepares a pickup quotation based on distance and load.
- You receive an email from your representative.
- The quote appears in your dashboard as **Ready** for **Review**.

If you accept the quote:

1. Place the order with your supplier.
2. Once you know when goods will be ready, schedule the collection in the app.
3. The pickup end date must be **at least 2 working days in advance**.
4. Click **Convert to Delivery Order** — the pickup is added to your incoming deliveries list.

Once collected, the delivery is measured at the warehouse and storage usage is updated.



Requesting Delivery to Ireland

When you're ready to ship some or all stored orders:

1. Click **Request Shipment**.
2. Select which orders should be included.
3. Confirm the request
(make sure your Irish delivery address is already saved).

At this stage:

- any additional charges (over-storage, local collections) are invoiced;
- you receive a payment request if applicable.

Packing and Transport Selection

- The warehouse prepares your shipment (up to 2 working days).
- Once ready, the shipment status changes to **Ready for Transport Choice**.
- You can see final pallet or parcel dimensions and weight.

You then choose one of the following:

- **Supersender insured transport** (price calculated automatically),
- **Individual transport quote** from your representative (not available on Basic plan),
- **Your own arranged courier or transport company**.

If using your own carrier:

- provide courier labels, **or**
- vehicle registration details for a transport company.

For Supersender transport:

- an invoice with payment link is issued,
- payment is required before dispatch.

Delivery Completion & Documentation

Once goods are delivered:

- click **Order Received** in the app;
- each stage is supported with photo documentation.

All inbound deliveries are checked for **external damage**.

If an issue occurs, the documentation usually allows quick identification and insurance handling.



STORE DIRECTORY

Where to Buy in Poland — and What to Expect as a Buyer

This directory is designed to help you navigate the Polish building materials market with confidence.

Rather than listing every possible supplier, it focuses on commonly used stores and brands, grouped by category, with practical notes on what they're best suited for, how they operate, and how buyers typically use them when sourcing from abroad.

The aim is not to recommend specific products, but to help you make informed decisions and avoid common sourcing mistakes.

1. DIY Stores

DIY stores are often the first sourcing point when buying building materials in Poland, offering wide availability and competitive pricing on stock items.

They offer wide availability, competitive pricing on stock items and access to multiple categories in one place. However, not all DIY stores operate in the same way when it comes to packaging, lead times and handling bulk or fragile orders.

Store	Website	Store Type	Best Used With	About	Things to Consider
Castorama	www.castorama.pl	DIY Superstore	ImportFromPoland / Supersender	Large national DIY chain offering a wide range of building, renovation and finishing materials across multiple categories.	<ul style="list-style-type: none">• mixed stock quality across categories• limited palletisation as standard• non-stock items may have longer lead times• large number of stores, for pick up options
Leroy Merlin	www.leroymerlin.pl	DIY Superstore	ImportFromPoland / Supersender	International DIY retailer with extensive stock availability and a strong focus on home improvement and interior products.	<ul style="list-style-type: none">• wide product range but varying packaging standards• bulk orders often require consolidation• flexible returns policy for in store returns
Bricoman	www.bricoman.pl	Trade focused DIY Superstore	ImportFromPoland / Supersender	Trade-oriented DIY superstore focused on construction materials, bulk items and professional-use products.	<ul style="list-style-type: none">• Trade-focused ranges prioritise bulk quantities• limited choice of finishes in stock items• price negotiation for larger orders
Obi	www.obi.pl	DIY Superstore	ImportFromPoland / Supersender	European DIY chain offering a broad selection of renovation, garden and home improvement products.	<ul style="list-style-type: none">• product availability varies by location• some ranges sourced seasonally• large number of stores around Katowice for local pick-up choice
Merkury Market	www.merkurymarket.pl	Regional DIY Superstore	ImportFromPoland / Supersender	Regional DIY superstore with a strong presence in southern Poland, offering competitive pricing on core building materials.	<ul style="list-style-type: none">• stronger focus on core building materials• narrower range of finishing products• usually focused on lower end of the price range
BricoMarche	www.bricomarche.pl	Local DIY Retailer	Supersender	Smaller-format DIY retailer focused on everyday renovation and maintenance products, often serving local markets.	<ul style="list-style-type: none">• smaller-format stores with limited stock depth• suitable for some individual item orders• limited stock across locations• different prices at different locations• limited delivery options



2. Bathrooms & Sanitaryware

Bathroomware is one of the most commonly sourced product groups from Poland.

The range, pricing and availability are often significantly broader than in Ireland, but bathrooms are also among the most sensitive categories when it comes to order accuracy, packaging quality and warranty handling.

In the full version of this guide, you'll learn how to identify suppliers that consistently deliver complete, well-packed orders — and which ones require extra care at the sourcing stage.

Store	Website	Store Type	Best Used With	About	Things to Consider
Rea	www.lazienka-rea.com.pl	Direct-to-consumer brand	ImportFromPoland / Supersender	Online-focused bathroom brand offering a broad range of fittings, ceramics, shower enclosures and accessories at competitive price points.	<ul style="list-style-type: none"> limited product customisation mixed stock availability fast delivery times on in stock items
LazienkaPlus	www.lazienkaplus.pl	Specialist multi-brand retailer	ImportFromPoland / Supersender	Large online retailer aggregating multiple bathroom brands in one platform.	<ul style="list-style-type: none"> split deliveries common lead times vary by brand packaging standards differ between suppliers
Excellent	www.excellent.pl	Brand with online store	ImportFromPoland / Supersender	Established Polish brand specialising in bathtubs, shower trays and bathroom furniture, with direct online sales.	<ul style="list-style-type: none"> made-to-order items increase lead times bulky items require space planning
Omnires	www.omnires.pl	Brand with online store	Supersender	Design-focused brand known for taps, showers and premium finishes, available via own online channels	<ul style="list-style-type: none"> higher price range than average considered a good quality brand internationally known brand
Deante	www.deante.pl	Brand with online store	Supersender	Large Polish brand offering taps, sinks, ceramics and accessories through its online store.	<ul style="list-style-type: none"> over 30 years experience premium Polish manufacturer usually reliable delivery times
Mexen	www.mexen.pl	Direct-to-consumer brand	Supersender	One of the most popular Polish budget bathroom brands online, with a very wide catalogue covering most bathroom categories.	<ul style="list-style-type: none"> careful product colour code matching required limited returns times as standard availability varies across ranges wide selection of designs and colours delivery times can vary
Braider	www.solidlazienki.pl	Brand with online store	ImportFromPoland / Supersender	Online retailer offering curated baths and accessories, often focused on good value to price ratio and contemporary designs.	<ul style="list-style-type: none"> small family-run business limited stock availability on some lines good value for money for in stock items, local pick up available
Sanitino	www.sanitino.pl	Bathroom retailer	Supersender	Large Central European bathroom e-commerce platform with Polish distribution.	<ul style="list-style-type: none"> large product selection often good discounts to be found main warehouse based in Czech Republic, making potential returns and claims more complicated
eLazienki	www.elazienki.pl	Specialist online retailer	Supersender	Polish bathroom e-commerce store offering a wide selection of branded products.	<ul style="list-style-type: none"> longer lead times on some brands split shipments common good discounts often available
Massi	www.massi.pl	Brand with online store	ImportFromPoland / Supersender	Polish bathroom brand offering taps, ceramics and shower solutions via its own online store.	<ul style="list-style-type: none"> limited range compared to multi-brand retailers stocks availability varies by the finish usually deliveries handled at a reasonable speed



DID YOU KNOW?

The same Polish brands sometimes sell identical products at very different prices depending on the delivery country.

Many suppliers list higher EUR prices for Ireland than their original PLN prices in Poland. By buying from the Polish store and using a Polish warehouse address via Supersender, you can often access the lower PLN pricing — without changing the product, only the delivery model.



3. Tiles, Flooring & Finishes

The suppliers listed below cover a wide range of **tiles, flooring and accessories** on the Polish market — from large national retailers to specialist tile and interior stores.

They are included based on **range, availability and practical suitability for export**, not on individual product recommendations. Each store works slightly differently in terms of stock, packaging and order handling, which matters when sourcing materials for delivery to Ireland.

Use this directory to understand which suppliers fit your order best and whether your purchase is better handled through **ImportFromPoland** or **Supersender**.

Store	Website	Store Type	Best Used With	About	Things to Consider
Nexterio	www.nexterio.pl	In store and online	ImportFromPoland / Supersender	Nationwide Polish retailer specialising in tiles, flooring and interior finishes, offering a broad range of mid-range and premium European brands through showrooms and online sales.	<ul style="list-style-type: none"> Stock and lead times vary by range For smaller orders choosing local collection in Katowice store can work out cheaper (on Supersender)
Opoczno Glazura	www.opocznoglazura.pl	online only distributor	ImportFromPoland / Supersender	Manufacturer-owned brand stores offering ceramic tiles produced by one of Poland's best-known tile manufacturers, with a focus on consistent collections and coordinated ranges.	<ul style="list-style-type: none"> Strong batch consistency High quality Only pallet deliveries (not suitable for small orders / add ons - delivery cost)
Komfort	www.komfort.pl	In store and online	ImportFromPoland / Supersender	Nationwide flooring specialist offering bathroomware, tiles, laminate, vinyl (LVT/SPC), carpets and interior accessories, with a strong retail network and good availability of stock items.	<ul style="list-style-type: none"> No particular single subject focus Items can be ordered into local store (Katowice) for store pick up Wide range of top manufacturers
Mera	www.mera.eu	In store and online	Supersender	Polish tile and interior finishes retailer offering a curated selection of ceramic tiles, bathroom finishes and complementary interior products, with a focus on contemporary designs.	<ul style="list-style-type: none"> High quality; unique and wide selection of styles and finishes Many items require longer lead times Offering optional design service
ABC plytki	www.abcplytki.pl	Online only distributor	Supersender	Specialist tile retailer offering a wide selection of ceramic and porcelain tiles from Polish and European manufacturers, focused primarily on wall and floor tile ranges.	<ul style="list-style-type: none"> Tile focused assortment, with limited accessories range Pallet courier service delivery only (high cost for small orders)
MaxFliz	www.maxfliz.pl/sklep	In store and online	Supersender	Premium interior and tile showroom chain offering high-end tiles, flooring and interior finishes, with a strong focus on design-led European brands.	<ul style="list-style-type: none"> Higher price positioning Many special-order items (pre-order) Very high-end selection of bathroomware and accessories
TGS	www.tgs.pl	In store and online	Supersender	Specialist tile wholesaler and retailer supplying ceramic and porcelain tiles, often used by installers and trade customers for volume-oriented tile orders.	<ul style="list-style-type: none"> Trade focused approach with limited showroom presentation Best suited for palletised orders No local collection option available
Plytki 24	www.plytki24.pl	Online only distributor	Supersender	Online-focused tile retailer offering a wide range of ceramic and porcelain tiles from Polish and European manufacturers, with nationwide delivery within Poland.	<ul style="list-style-type: none"> Primarily online-only Confirm availability and batch consistency before ordering Pallet courier delivery service only
Bel-Pol	www.bel-pol.pl	In store and online	ImportFromPoland / Supersender	Nationwide Polish flooring retailer specialising in laminate, vinyl (LVT/SPC) and carpet flooring, with a strong retail network and good availability of mainstream flooring ranges.	<ul style="list-style-type: none"> Focused on flooring and doors, not tiles Large stock availability, reasonable lead times Local collections possible
Panelowy	www.panelowy.pl	Online only distributor	ImportFromPoland / Supersender	Online flooring specialist offering laminate, vinyl (LVT/SPC) and engineered wood flooring, with a strong focus on competitive pricing and nationwide delivery within Poland.	<ul style="list-style-type: none"> Primarily online only, with limited showroom support Supersender local collection possible, or store delivery options (especially on heavier items) Best prices on underlay etc
1000 Podłóg	www.1000podlog.pl	Online only distributor	Supersender	Polish flooring retailer offering laminate, vinyl (LVT/SPC) and engineered wood flooring, with a broad selection aimed at residential interior projects.	<ul style="list-style-type: none"> Flooring-focused with limited accessories Availability may vary by range and warehouse Courier delivery only



4. Insulation, ETICS, Renders & Building Materials

This section covers suppliers of **insulation systems, adhesives, renders, dry wall materials, electrical cables and general building chemicals** commonly sourced from Poland.

These products are typically specified early in the build, but often purchased later once quantities, logistics and scheduling are confirmed. Because of **weight, palletisation and system compatibility**, supplier choice and delivery model play a critical role when sourcing these materials internationally.

The stores listed below are included based on **availability, consistency of supply and suitability for consolidated transport**. Use this directory to understand where each supplier fits best and whether your order is better handled through **ImportFromPoland** full service or **Supersender** direct sourcing.

Store	Website	Store Type	Best Used With	About	Things to Consider
Lubar	www.sklep-lubar.pl	In store and online	ImportFromPoland / Supersender	Regional building materials wholesaler supplying insulation, ETICS components, adhesives, renders and general building chemicals, with online ordering available.	<ul style="list-style-type: none"> • Trade-oriented assortment with system based product • Limited English speaking support • Large stock availability
Askot Kraków	www.askot.krakow.pl	In store and online	ImportFromPoland / Supersender	Specialist supplier focused on roofing systems, brick slips and facing bricks, offering materials for façades and roof finishes, with online ordering available.	<ul style="list-style-type: none"> • Best place for brick slips and roofs • Limited English speaking support • For large orders, please discuss onwards transport options first
Folnet	www.folnet.pl	Online only distributor	ImportFromPoland / Supersender	Specialist supplier of construction foils, membranes and insulation accessories, including roofing, façade and vapour control products, with online ordering available.	<ul style="list-style-type: none"> • Focused on membranes and foils • Wide range and attractive prices • Quick delivery times
Bauhaus	www.pianeo.pl	Online only - manufacturer store	ImportFromPoland / Supersender	Polish manufacturer of construction chemicals, including expanding foams, adhesives, sealants and related products, offering direct online sales from the producer.	<ul style="list-style-type: none"> • Popular Polish Manufacturer • Manufacturer direct purchases - best prices • Good quality products
TIM	www.tim.pl	Online only distributor	ImportFromPoland / Supersender	Nationwide, online electrical wholesaler offering cables, wiring accessories, switchgear and installation materials, with a fully developed online store.	<ul style="list-style-type: none"> • Electrics-focused assortment • Wide selection of items • Quick despatch • Courier only
el12	www.el12.com	In store and online	ImportFromPoland / Supersender	Polish electrical wholesaler supplying cables, electrical installation materials and switchgear, with online ordering available for trade and retail customers.	<ul style="list-style-type: none"> • Trade focused + trade discounts available (direct only) • Good instant availability for pick up
Platforma Izolacji	platformaizolacji.pl	Online only distributor	Supersender	Online platform specialising in thermal insulation materials, including EPS, mineral wool and complementary insulation products, with nationwide delivery within Poland.	<ul style="list-style-type: none"> • Full pallet orders only • Online distributor • Min order requirements • Lowest prices
Hurtownia Styropianu	hurtowniastyropianu.pl	Online only distributor	Supersender	Online retailer specialising in EPS insulation products, offering a wide range of styrofoam boards for building and façade applications. Wide selection of render systems too.	<ul style="list-style-type: none"> • Online-only • For full systems deliveries in 3-4 separate runs over 2 weeks (EPS, Adhesive, Render, Accessories)
Bednarek	bednarek.sklep.pl	In store and online	Supersender	Local builder's merchant, supplying paints, adhesives, dry lining systems, plaster, watertanking etc. Local pick up only available. EPS and mineral wool min order requirement apply	<ul style="list-style-type: none"> • Local builders yard • Limited English speaking support • Local pick up only (supersender)
Mal-Drew	www.maldrew.com.pl	In store and online	ImportFromPoland / Supersender	Regional supplier of building materials and finishing systems, including insulation accessories, dry wall materials, construction boards and complementary products, with online ordering available.	<ul style="list-style-type: none"> • Broad but trade-oriented assortment with good stock levels • Local stores, so courier delivery as well as local pick up can be arranged. • Trade discounts possible (direct)



5. Furniture, Light fittings, Curtains & Blinds

The Polish market offers an exceptional range of **ready-made furniture** alongside a very wide selection of **made-to-order products**, including advanced **online configurator systems** that allow buyers to customise dimensions, finishes, fabrics and details before ordering.

This is especially true for **curtains and blinds**, where made-to-measure roller blinds, Roman blinds and other shading systems can be specified online with a high level of precision, giving buyers full control over both function and appearance.

For those looking for **made-to-measure** furniture, the list below also includes **two manufacturers offering fully bespoke units through online design tools**. These solutions allow users to design and order custom furniture directly, making them especially attractive for buyers comfortable with a hands-on or DIY-oriented approach — often at significantly lower cost than equivalent local options.

Store	Website	Store Type	Best Used With	About	Things to Consider
Agata Meble	www.agatameble.pl	In store and online	ImportFromPoland / Supersender	Large national furniture retailer offering ready-made furniture for living rooms, bedrooms, dining areas and home offices, with a fully developed online store.	<ul style="list-style-type: none"> Large selection and good quality Popular stop for sofas & couches Impressive light fittings selection at good value
Black Red White	www.brw.pl	In store and online	ImportFromPoland / Supersender	One of Poland's largest furniture manufacturers and retailers, offering ready-made and modular furniture for living rooms, bedrooms, kitchens and storage, with online ordering available.	<ul style="list-style-type: none"> Primarily mass-produced ranges Lead times can vary, limited updates Lower end + mid range price mark focus
Meble.pl	www.meble.pl	Online only	ImportFromPoland / Supersender	Large online furniture marketplace offering a wide selection of ready-made furniture from multiple Polish manufacturers, covering living, bedroom, dining and home office categories.	<ul style="list-style-type: none"> Marketplace, meaning quality, lead times and packing can differ Offering comprehensive bespoke furniture design tool (flat-packed)
Fabryka Mebli	www.fabrykamebli.pl	Online - manufacturer	ImportFromPoland / Supersender	Polish furniture manufacturer offering made-to-order furniture, with online configurator tools allowing customers to customise dimensions, layouts and finishes.	<ul style="list-style-type: none"> Good quality and value Around 4 week production times Wide selection of designs and finishes Limited fronts options
Grekon	www.grekon.pl	Online - manufacturer	ImportFromPoland / Supersender	Polish manufacturer of high quality bathroom furniture and vanity units. Units come pre-assembled - taking more space, but reducing assembly error risks.	<ul style="list-style-type: none"> Bathroom furniture sole focus High end, pre-assembled products Wide selection of designs Matching accessories available
CzasNaRolety	czasnarolety.pl	Online - manufacturer	ImportFromPoland / Supersender	Online specialist offering made-to-measure roller blinds, Roman blinds and other window shading systems, with configuration and ordering available directly through the website.	<ul style="list-style-type: none"> Made to order, with no returns options Measurement instructions can differ depending on the system chosen Large choice of materials and designs
Oslona Okna	oslonaokna.pl	Online - manufacturer	ImportFromPoland / Supersender	Online retailer specialising in made-to-measure blinds and window coverings, including roller blinds, Roman blinds and pleated systems, with configuration and online ordering available.	<ul style="list-style-type: none"> Made to order, with no returns options Wide selection of design and materials Short lead times
Domondo	domondo.pl	Online - manufacturer	ImportFromPoland / Supersender	Online specialist platform focused on made-to-measure window coverings, including roller blinds, Roman blinds, pleated blinds, external blinds, insect screens and pergola systems, with advanced online configurators.	<ul style="list-style-type: none"> Wide selection of types and materials Smart Home solutions available Made to measure and specification Short production times
Phenomena Light	phenomena-light.pl	Online only	ImportFromPoland / Supersender	Polish lighting distributor specialising in decorative lighting, offering modern and minimalist designs with customisable finishes and configurations, available through online ordering.	<ul style="list-style-type: none"> Online only distributor Wide selection of main manufacturers Short lead times on in stock items Bulk purchases discounts available
ElBis	lampyelbis.pl	In store and online	ImportFromPoland / Supersender	Polish lighting retailer and manufacturer offering a wide range of decorative and functional lighting, including ceiling lights, wall lights and lamps, with online ordering available.	<ul style="list-style-type: none"> Online distributor, with a showroom in Tychy (20km from MAK office) Similar range to Phenomena, with possibility to see the selection in the showroom



VISIT POLAND

If online research isn't enough, seeing materials in person is the next logical step

Online research, configurators and product directories make it possible to shortlist materials without leaving home. However, for many buyers this is still not enough. **Colours, textures, proportions and overall build quality are often best judged in person**, especially when several key decisions need to be made at once.

A well-planned visit to Polish showrooms allows you to compare bathrooms, tiles, flooring, façades, furniture and lighting across multiple suppliers within a short time frame. With the right route, it is possible to see in two intensive days what would otherwise take weeks of fragmented visits.

This chapter is designed for those who want to take the next step after online research. It shows how showroom visits can be organised independently, using a proven route plan, or completed as part of a guided showroom tour where logistics, transport and daily scheduling are handled for you. In both cases, the goal is the same: **to make confident material choices based on real-world experience, not assumptions**.

In the following pages, I will outline the key considerations when planning such a trip, followed by a structured showroom route covering the most relevant locations and categories.

The Showroom Route

Below you'll find the **exact showroom route we use with our clients**, followed in the same sequence on every tour. This order is not accidental — it has been refined over time to minimise travel, avoid unnecessary backtracking and allow logical progression from technical materials to interior finishes.

You are welcome to use this route independently and adapt it to your own priorities, pace and time constraints. In the sections that follow, I will present each stop on the route, explaining **what is best to see at each location** and why it is included.

Alongside the showroom overview, I also share **practical tips and local insights** to help you organise the trip on your own if you choose to do so — including guidance on where to stay, where to eat, and where to unwind in the evening after a full day of showroom visits.

Whether you decide to follow the route independently or join an organised showroom tour, the aim is the same: **to help you make confident, informed material choices while making the most of your time in Poland**.





1. Bricoman - Jaworzno (30 - 60 min)

Why this stop

Bricoman is an excellent starting point for the showroom route, especially for visitors arriving from Kraków or Katowice airport in the morning. It provides a broad, practical overview of core building and finishing materials in one location, helping visitors quickly calibrate expectations around ranges, formats and price levels.

What to focus on

This stop works best as an orientation point. It allows you to see a wide cross-section of products before moving on to more specialised showrooms later in the day.

Key categories to review here include:

- bathroom fittings and sanitaryware,
- ceramic tiles and basic wall and floor finishes,
- insulation materials, adhesives and building chemicals,
- general construction accessories and installation products.

Rather than comparing individual brands in detail, the value of this visit lies in **understanding product scale, finish quality and typical system components**.

Practical notes

The store is spacious and easy to navigate, making it a good first stop before decision fatigue sets in. Parking is straightforward, and the location allows for a smooth transition to the next points on the route in the Zagłębie and Katowice area.

Address

Bricoman Jaworzno
Jana Kantego Steczkowskiego 10
43-600 Jaworzno

Opening hours :

Mon-Fri : 06:00 - 21:00

Saturday: 07:00 - 20:00

Sunday : CLOSED





2. Pan Expert - Dąbrowa Górnicza (15 - 45 min)

Why this stop

PanExpert is a key stop on the route for anyone focusing on **flooring and internal doors**. It offers a strong, practical overview of high-quality laminate and vinyl flooring alongside very **comprehensive internal door showroom**,

This location is particularly valuable for visitors who want to compare finishes, colours and product quality in person — something that is difficult to assess reliably online.

What to focus on

PanExpert works best as a dedicated flooring and doors stop, rather than a general inspiration showroom.

Key areas to focus on include:

- laminate and vinyl flooring from well-known, reputable brands,
- differences in surface finish, structure and wear layers,
- internal door systems, finishes and configurations,
- comparing door styles, frames and hardware options side by side.

The showroom itself is relatively simple and may feel closer to a warehouse than a design studio. **Do not let the simplicity of the building mislead you** — the real value of this stop lies in the **expert knowledge of the staff** and the depth of the product range available inside.

Practical notes

This stop fits naturally after an initial DIY visit, allowing you to narrow down flooring and door preferences before moving on to more design-led interior showrooms later in the route.

The access is quite tricky - around 100m down the narrow road, however, there's always enough parking on site. It's one of the places people don't end up visiting accidentally.

Address

Pan Expert
Zagórska 11
41-300 Dąbrowa Górnicza

Opening hours :

Mon-Fri : 09:00 - 17:00

Saturday: 09:00 - 13:00

Sunday : CLOSED





3. Castorama - Sosnowiec (90 - 120 min)

Why this stop

Castorama Sosnowiec is an important early reference point on the route, offering a **broad, cross-category overview** of materials commonly used in residential projects. It helps visitors benchmark mainstream product ranges, layouts and price levels before moving on to more specialised and design-focused showrooms.

This stop is particularly useful for understanding what is widely available off the shelf and how different product categories are typically presented to end customers.

What to focus on

The value of this visit lies in comparison and orientation rather than detailed product selection.

Key areas to focus on include:

- bathroom furniture, sanitaryware and accessories,
- ceramic tiles and basic wall and floor finishes,
- laminate and vinyl flooring ranges,
- lighting, doors and interior accessories.

Rather than making decisions here, the goal is to **build context** — understanding proportions, finishes and standard solutions that will later help you assess higher-end or specialist offers elsewhere on the route.

Practical notes

This is a large-format store, so it is worth having a clear focus to avoid visual overload. The location in Sosnowiec fits well into the route between Dąbrowa Górnicza and central Katowice, keeping travel time efficient.

Castorama works best as a comparative stop that prepares you for more targeted showroom visits later in the day.

Address

Castorama Sosnowiec
Jana Długosza 82
41-219 Sosnowiec

Opening hours :

Mon-Fri : 06:30 - 21:00

Saturday: 06:30 - 20:00

Sunday : CLOSED





4. Braider baths - Pokazownia PL showroom space (10 - 20 min)

Why this stop

This stop introduces a different style showroom experience, focused on small manufacturers rather than mass-market ranges. The Braider display is located within PokazowniaPL — a shared showroom space used by smaller manufacturers who prefer to showcase their products without maintaining individual flagship stores.

It is an important contrast point on the route, allowing visitors to step away from large retail environments and focus on design-led, high-quality bathroom products.

What to focus on

At this location, the main focus is on Braider bathtubs, including freestanding and design-oriented models that are best assessed in person.

Key aspects to pay attention to include:

- proportions and scale of bathtubs in real space,
- surface finishes and material feel,

While the primary purpose of this stop is Braider, visitors often notice other interesting items on display, such as furniture or interior elements. Each product in the showroom is equipped with a QR code, which links directly to the manufacturer's product page.

Practical notes

The showroom is located on the **first floor** of the building. After entering PokazowniaPL, **take the stairs on the right-hand side** to reach the display area.

This stop is best approached with a selective mindset — it is not about comparing dozens of options, but about identifying distinctive products that stand out and may later be specified as part of a broader bathroom design.

Address

Pokazownia PL
Jana Długosza 61
41-219 Sosnowiec

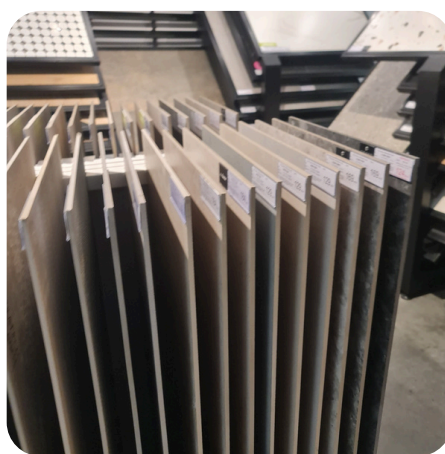
Opening hours :

Mon-Fri : 09:00 - 17:00

Saturday: 09:00 - 13:00

Sunday : CLOSED





5. MaxFliz - Katowice (30 - 60 min)

Why this stop

MaxFliz is one of the most design-led showrooms on the route and a key stop for anyone looking for **higher-end finishes and coordinated interior concepts**. It bridges the gap between purely technical showrooms and fully curated interior spaces, helping visitors understand how materials work together in finished interiors.

This stop is particularly valuable after earlier, more functional locations, as it allows you to reassess choices through the lens of **design, proportions and overall aesthetic**.

What to focus on

MaxFliz works best when approached selectively. The showroom presents a wide range of premium products, but the real value lies in understanding **material combinations and visual balance**, rather than comparing individual SKUs.

Key areas to focus on include:

- high-end ceramic and porcelain tiles,
- bathroom fittings and complete bathroom concepts,
- surface finishes, textures and large-format applications,
- how different materials interact within a single interior scheme.

Rather than trying to see everything, it is worth identifying **styles, finishes and combinations** that resonate with you and noting them for later specification.

Practical notes

The Katowice showroom is spacious and professionally laid out, but it can be visually demanding. This is a good point in the day to slow down, take notes and photos, and consolidate impressions gathered earlier. MaxFliz also serves as a useful reference for what is possible at the premium end of the market, even if final selections are made elsewhere.

Address

Max Fliz - Home Concept
Al Walentego Rozdzieńskiego 191
40-315 Katowice

Opening hours :

Mon-Fri : 10:00 - 19:00

Saturday: 10:00 - 18:00

Sunday : CLOSED





6. Mera - Katowice (15 - 40 min)

Why this stop

Mera is a strong, well-balanced showroom focused on **tiles and bathroom finishes**, positioned between mainstream retail and premium, design-led spaces. It is a useful stop for visitors who want to compare a wide selection of tiles and bathroom solutions in a more controlled, less overwhelming environment than large-format stores.

This showroom works particularly well for narrowing down practical, but still premium choices after visiting some inspirational locations.

What to focus on

The key value of Mera lies in **comparability and range clarity**. The showroom allows you to review many tile collections and bathroom elements side by side without excessive visual noise.

Key areas to focus on include:

- ceramic and porcelain tiles across different sizes and finishes,
- wall vs floor applications and surface textures,
- coordinated tile ranges suitable for full bathrooms,
- practical considerations such as grout lines, edges and transitions.

This is a good place to move from inspiration toward **realistic, build-ready selections**.

Practical notes

Mera shares **the same parking area as MaxFliz**. Simply cross to the other side of the car park and continue your tile showroom visits without needing to move the car.

Parking is **free of charge**, but note that **a single stay is limited to 3 hours and monitored via ANPR**. This makes it practical to combine both showrooms into one continuous stop, but it is worth keeping an eye on time.

Address

MERA - Home Concept
Al Walentego Rozdzieńskiego 189
40-315 Katowice

Opening hours :

Mon-Fri : 10:00 - 19:00

Saturday: 10:00 - 17:00

Sunday : CLOSED





7. Komfort - Katowice (15 - 40 min)

Why this stop

Komfort is a key stop on the route for anyone focusing on **tiles and flooring solutions**, offering a broad and well-structured overview of laminate, vinyl and interior floor finishes. Located within Home Concept Park, it naturally extends the tile-focused visits at MaxFliz and Mera into the flooring category. This stop is particularly useful for translating earlier design inspiration into **practical, build-ready flooring choices**.

What to focus on

Komfort works best as a comparative flooring stop rather than a place for quick decisions. The showroom allows you to assess finishes, textures and formats side by side in a controlled setting.

Key areas to focus on include:

- laminate flooring across different durability classes,
- vinyl and SPC/LVT flooring systems,
- colour matching between floors and previously selected tiles,
- practical aspects such as thickness, edge profiles and installation systems.

This is a good moment to consider how flooring choices connect visually and technically with bathrooms, kitchens and living spaces reviewed earlier on the route.

Practical notes

Mera shares **the same parking area as Mera and MaxFliz**. There is no need to move the car, – simply continue on foot between showrooms.

Parking is **free of charge**, but note that **a single stay is limited to 3 hours and monitored via ANPR**. This makes it practical to combine both showrooms into one continuous stop, but it is worth keeping an eye on time.

Address

Komfort - Home Concept
Al Walentego Rozdzieńskiego 189
40-315 Katowice

Opening hours :

Mon-Fri : 10:00 - 20:00

Saturday: 10:00 - 18:00

Sunday : CLOSED





8. Leroy Merlin - Katowice (60 - 90 min)

Why this stop

Leroy Merlin Katowice (Alpejska) is a **large-format flagship store** spanning two levels, making it one of the most comprehensive single-stop retail locations on the route. It provides a broad overview of both **construction materials and interior finishes**, helping visitors connect structural choices with final design elements.

This stop works well after more specialised showrooms, offering a wide-angle view of how different product categories come together in a typical residential project.

What to focus on

This is a two-level superstore and works best when visited with a clear structure.

The **ground floor** covers construction materials, fencing, flooring and internal doors. The **upper floor** focuses on finishes, including paints, bathrooms, tiles, mirrors, rugs and wallpapers.

This stop is best used for cross-category orientation, helping connect earlier technical choices with final interior finishes rather than for detailed product comparison.

Practical notes

The store is located slightly away from the main shopping centre buildings. Parking **directly in front of the store** is convenient but can become busy at peak times. If spaces are limited, it is often easier to park in the **main shopping centre parking** area and walk across.

The main parking access road functions as a **dual carriageway**, with **right-turn exit only**, which is worth keeping in mind when planning the next stop on the route.

Address

Leroy Merlin - 3 Stawy
Alpejska 4
40-507 Katowice

Opening hours :

Mon-Fri : 06:30 - 21:00
Saturday: 10:00 - 18:00
Sunday : CLOSED





9. Nexterio - Katowice 2 (20 - 40 min)

Why this stop

Nexterio is a strong, specialist interior showroom focused on **tiles, bathrooms and interior finishes**, making it a natural follow-up to the large-format retail environment of Leroy Merlin. It allows visitors to move from a broad overview into a more curated and product-oriented presentation of focus product categories.

This stop is particularly useful for refining choices and comparing more coordinated interior solutions. Very often it provides the best value on tiles.

What to focus on

Key areas to focus on include:

- ceramic and porcelain tiles in a wide range of formats,
- bathroom furniture and coordinated bathroom solutions,
- surface finishes, textures and colour combinations,

This is a good place to reassess selections made earlier and identify collections worth taking forward for detailed pricing and specification.

Practical notes

Nexterio is located close to Leroy Merlin within the **Alpejska retail area**, making it easy to combine both stops without additional driving. Parking availability depends on time of day and general retail traffic, so allowing a short buffer here is advisable.

This showroom works well as a calmer, more focused contrast to the scale of the neighbouring superstore

Address

Leroy Merlin - 3 Stawy
Alpejska 4
40-507 Katowice

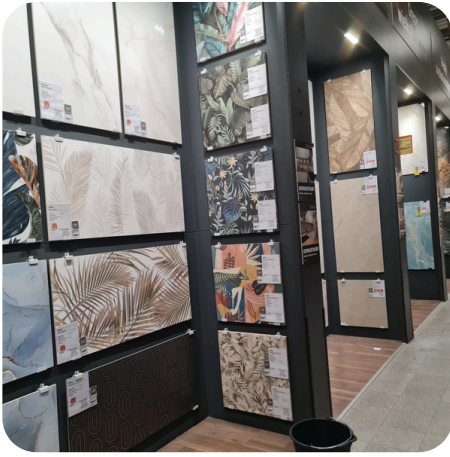
Opening hours :

Mon-Fri : 06:30 - 21:00

Saturday: 10:00 - 18:00

Sunday : CLOSED





10. Obi - Katowice (60 - 90 min)

Why this stop

OBI Katowice (Rolna) is a useful comparative stop on the route, offering a **mainstream DIY and interior assortment** presented in a slightly different way to other large-format stores visited earlier. It provides additional reference points for products, layouts and pricing before moving fully into furniture-focused locations.

This stop helps confirm which solutions are genuinely interchangeable across retailers and which stand out in terms of finish or presentation.

What to focus on

OBI works best as a reference and comparison stop, rather than a place for all-in-one selection.

Key areas to focus on include:

- bathroom furniture, fittings and accessories,
- ceramic tiles and wall finishes,
- basic flooring solutions,
- lighting and interior accessories.

The value here lies in spotting differences in presentation, finishes and bundled solutions, rather than in brand-by-brand analysis.

Practical notes

The store is easy to access from central Katowice and works well as a transitional stop before heading toward the furniture-focused part of the route. Parking is available directly on site and generally straightforward.

This visit helps round off the retail comparison phase of the tour before moving on to more dedicated furniture and interior showrooms.

Address

Obi
Rolna 4
40-555 Katowice

Opening hours :

Mon-Fri : 07:00 - 21:00

Saturday: 09:00 - 21:00

Sunday : CLOSED





11. Black Red White - Chorzów (60 - 90 min)

Why this stop

Black Red White is one of Poland's largest furniture manufacturers and retailers, making this showroom an important reference point for **ready-made and modular furniture solutions**. It provides a clear overview of what is realistically achievable in terms of layout, storage and furnishing using mass-produced systems.

This stop works particularly well after the DIY and interiors section of the route, shifting the focus fully toward **furniture planning and room functionality**.

What to focus on

The showroom is best approached as a space for understanding **systems and configurations**, rather than individual pieces.

Key areas to focus on include:

- modular living room and storage systems,
- bedroom furniture and wardrobes,
- dining furniture and coordinated collections,
- how modular elements scale across different room sizes.

The value here lies in seeing how furniture systems are repeated, adapted and combined across different room layouts.

Practical notes

The Chorzów location sits close to the DTŚ route, making it an efficient stop when moving between Katowice and other parts of the agglomeration. Parking is available on site and generally straightforward.

This showroom works well as a first dedicated furniture stop, setting a practical baseline before visiting more design-oriented or varied furniture retailers later on the route.

Address

Black Red White
Drogowa Trasa Średnicowa 50
41-506 Chorzów

Opening hours :

Mon-Fri : 10:00 - 20:00

Saturday: 10:00 - 18:00

Sunday : CLOSED





12. Agata Meble - Katowice (90 - 120 min)

Why this stop

Agata Meble is consistently one of the **most appreciated furniture stops** among clients joining showroom tours. Its strength lies in the combination of **breadth of choice and practical presentation**, making it easy to compare furniture styles, sizes and finishes in real-life settings.

This showroom works particularly well as a place to make tangible progress on living spaces, rather than just gathering inspiration.

What to focus on

Agata Meble offers a wide and well-balanced range across several interior categories, allowing visitors to cover a lot of ground in one visit.

Key areas to focus on include:

- sofas and corner sofas in various sizes, fabrics and configurations,
- living room and dining furniture,
- bedroom furniture and storage solutions,
- kitchen furniture ranges,
- a large and well-developed lighting studio, offering a broad selection of lamps and lighting

This is a good place to assess comfort, proportions and material feel, especially for upholstered furniture, which is difficult to judge online.

Practical notes

The Katowice location is easy to access and works well as a longer stop, as many visitors naturally spend more time here than initially planned. The layout allows for relaxed browsing without the pressure of making immediate decisions.

Agata Meble often becomes a key reference point later in the process, helping validate or rule out furniture choices made elsewhere.

Address

Agata Meble
Al Walentego Roździeńskiego 93
40-203 Katowice

Opening hours :

Mon-Fri : 10:00 - 20:00

Saturday: 10:00 - 20:00

Sunday : CLOSED



ImportFromPoland



13. Home Park Rawa - Katowice (45 - 90 min)

Why this stop

HomePark Katowice Rozdzień is a **concentrated cluster of interior showrooms**, making it an efficient stop for reviewing several categories in one location. Instead of visiting individual stores across the city, this stop allows you to move seamlessly between furniture, flooring and interior solutions within a single complex. It works particularly well toward the later part of the route, when visitors already have a clearer sense of their preferences and want to compare options more deliberately. Consider the stores uppler-level.

What to focus on

HomePark is best approached selectively, focusing on a few key showrooms rather than trying to see everything.

Notable stops within the complex include:

- **Bel-Pol** – flooring solutions, including laminate and vinyl, internal doors
- **Premium Parkiet** – high-quality wooden flooring and premium floor finishes,
- **Livingroom** – sofas, upholstered furniture and living space solutions,
- **Mebloo** – contemporary furniture and interior solutions.

This stop allows you to compare similar product categories across different retailers in a short amount of time, which is particularly useful for validating earlier choices.

Practical notes

HomePark offers large, convenient parking directly on site, located just outside Ikea entrance. The layout is straightforward and well suited to a flexible visit, whether you plan to spend a short focused stop or a longer comparative session. There's "Biedronka" on the ground floor - handy if you'd like to buy some snacks or drinks.

Address

Homepark Rawa
Al Walentego Roździeńskiego 97
40-203 Katowice

Opening hours :

Mon-Fri : 10:00 - 20:00

Saturday: 10:00 - 20:00

Sunday : CLOSED





14. Nowy Rozdzień - Katowice (20 - 45 min)

Why this stop

Nowy Rozdzień is a **design-oriented interior centre** bringing together multiple showrooms focused on furniture, lighting and interior solutions. It is best suited as an optional extension of the route for visitors who want to explore more curated and design-led concepts after covering the main furniture and flooring stops.

This location works particularly well for those looking for inspiration beyond mainstream retail offers.

What to focus on

The strength of Nowy Rozdzień **lies in its variety of styles and specialist brands** presented within a single complex.

Key areas to focus on include:

- contemporary and premium furniture showrooms,
- lighting and decorative interior elements,
- distinctive design concepts not commonly found in large retail chains.

This stop is less about narrowing down final specifications and more about broadening perspective and discovering alternative design directions.

Practical notes

Nowy Rozdzień is located close to HomePark, making it easy to add to the route if time and energy allow. Parking is available on site and generally straightforward.

As this is an optional stop, it works best toward the end of the day, when priorities are already clear and visitors can browse selectively without time pressure.

Address

Galeria "Nowy Rozdzień"
Al Walentego Roździeńskiego 199
40-313 Katowice

Opening hours :

Mon-Fri : 10:00 - 19:00

Saturday: 10:00 - 17:00

Sunday : CLOSED



15. Optional Stops & Route Extensions

For visitors with additional time or specific sourcing priorities, the following optional stops can be added to the showroom route. These locations are not essential to completing the main tour, but can add value depending on the stage of your project and areas of interest.

MAK Consulting Office – Siemianowice Śląskie *(optional)*

ul. Klonowa 1D, 41-100 Siemianowice Śląskie

This stop provides a focused overview of **bespoke and technical product categories** handled directly through **ImportFromPoland**.

What to see here:

- windows and door solutions,
- standing seam roofing, metal roofing and Ruukki gutter systems,
- elevation boards and composite decking solutions.

This visit works best for clients considering made-to-order elements that require specification, drawings and individual quotations rather than online purchasing.

Mera – Tychy (main showroom + outlet) *(optional)*

Przemysłowa 70, 43-100 Tychy

The Tychy location combines the main Mera showroom with a dedicated tile outlet, making it a valuable stop for those looking to balance design choices with budget considerations.

What to see here:

- full tile and bathroom collections in the main showroom,
- discounted and end-of-line tiles in the outlet section,
- opportunities to secure premium tiles at reduced prices

This stop is particularly useful once tile preferences are already broadly defined.

Elbis – Tychy *(optional)*

Generała Władysława Sikorskiego 72, 43-100 Tychy

Elbis Tychy is often referred to as one of the largest lighting showrooms in the region, making it a strong optional stop for projects where lighting plays a central role.

What to see here:

- a very wide range of decorative and functional lighting,
- ceiling, wall and feature lighting solutions,
- practical comparisons of scale, brightness and finish.

This visit works well for confirming lighting choices that are difficult to assess online.

Merkury Market – Tychy *(optional)*

Towarowa 2e, 43-100 Tychy

Merkury Market offers a different retail perspective compared to the large DIY chains visited earlier on the route.

What to see here:

- alternative ranges of interior finishes and fittings,
- comparative pricing on selected product categories,
- solutions that may not appear in mainstream DIY stores.
-

This stop is best used as a reference and comparison point, especially for visitors curious about non-standard retail formats.



Food, Breaks & Evenings During the Showroom Tour

Showroom visits are intensive by nature. Over one or two full days, you will be making dozens of visual and technical decisions while moving between large retail spaces and specialist showrooms. Planned breaks are not a luxury — they are part of staying focused and productive throughout the trip.

The suggestions below are based on proximity to the showroom route, ease of access and predictability, rather than fine dining or trend-driven choices.

Lunch Breaks — Practical Stops Along the Route

1. Silesia City Center – Food Court (Katowice / Chorzów)

Once you reach the Katowice–Chorzów area, this is often the most convenient and flexible lunch stop on the route. If you are starting further out (Jaworzno, Sosnowiec or Dąbrowa Górnicza), it is worth planning your schedule so that you arrive in Katowice / Chorzów around lunchtime, keeping the drive to Silesia City Center short.

The food court offers a very **wide selection of cuisines (over 20 food outlets)**, making it easy to accommodate different preferences without losing time.

Parking is **free for up to 3 hours**, but you must **register your car registration number at the parking meter** outside the centre entrance to avoid a fine.

2. “3 Stawy” Shopping Centre – Food Court (near Leroy Merlin / Nexterio / OBI)

If you are in the **Alpejska / 3 Stawy retail area**, the food court at 3 Stawy Shopping Centre is a practical alternative.

The selection is smaller than at Silesia City Center but generally quicker and easier for a short break. Options typically include:

- Pizza Hut,
- Greek-style salads and wraps,
- Polish food sold by weight,
- Thai buffet.

This stop works well when you want a **short, efficient lunch** before continuing with showroom visits nearby.

3. Sosnowiec / Dąbrowa Górnicza / Jaworzno — limited options

If you are still in the Sosnowiec, Dąbrowa Górnicza or Jaworzno area around lunchtime, **restaurant options are more limited**. In these locations, it is often more practical to use **quick-service chains** (e.g. McDonald's or similar) rather than spending time searching for a suitable sit-down option.

This is another reason why many visitors choose to shift lunch closer to the Katowice area, where choice and logistics are simpler.



Food Recommendations — Dinner Options

1. Bułkęs

This is where we most often dine during organised showroom tours. Bułkęs offers comfort American-style food such as burgers and pulled meats, served in generous portions and consistently high quality.

What makes it particularly suitable for groups is its versatility — alongside classic comfort food, the menu includes options for:

- healthier diets,
- vegetarian and vegan preferences,
- gluten-free requirements.

This makes it a safe and reliable choice when dining with larger or mixed groups, where everyone needs to find something suitable.

2. Tatiana Restaurant — Polish Cuisine

Tatiana is a well-established restaurant serving **traditional Polish dishes** in a comfortable, sit-down setting. It works well for visitors who want to experience local cuisine in a calm environment after a long day of decisions.

This is a good option when the group prefers a slower-paced dinner focused on conversation and recovery rather than quick turnover.

3. Pizza z Pieca – Classic Italian Style

A reliable option for classic Italian-style pizza, prepared in a traditional oven. Simple, predictable and easy to share, this restaurant works well when the group wants something informal and uncomplicated.

4. Taj Katowice — Thai Cuisine

A solid choice for those looking for Thai flavours and a change from European cuisine. This works particularly well for smaller groups or when dietary variety is a priority.

Drinks & Evening Options

Mariacka Street — Katowice

Mariacka Street is the main evening hub in Katowice, with **20+ pubs and bars** operating side by side, each with its own atmosphere and character.

This format makes it easy for everyone to find something that suits them — whether it's a quiet drink, a casual pub or a more lively setting — without needing to travel between locations. It works well for a short, relaxed evening before heading back to the hotel.



Cost Comparison: Self-Organised Trip vs Organised Showroom Tour

Below is a realistic cost comparison for a two-day showroom trip for two people, excluding flights (which vary by date and add-ons).

This comparison assumes comfortable, decision-friendly travel conditions, not a low-budget city break.

Self-Organised Showroom Trip (2 people)

Car hire

- Rental (2 days): approx. €150
- Additional fees / insurance: €30–50

Fuel

- One full tank for the full route: €70–90

Motorways / tolls

- A4 motorway: $4 \times 17 \text{ PLN} \approx €15\text{--}16$

Hotel with breakfast

- 2 nights, double room: €200–250
- (depending on location and dates)

Dinners (2 evenings)

- Approx. 100–120 PLN per person per dinner
- 2 dinners \times 2 people = 400–480 PLN \approx €90–110

Lunches (2 days)

- Approx. 40–50 PLN per person per lunch
 - 2 lunches \times 2 people = 160–200 PLN \approx €35–45
-

Estimated total — self-organised (2 people)

Approx. €590 – €710 (excluding flights)

Costs can be reduced further by choosing budget accommodation or cutting back on meals.

However, this estimate reflects conditions that support focus, energy and decision-making, not minimum spend.

Organised Showroom Tour with ImportFromPoland

Price

- €550 for 2 people
- or €350 per person

Included in the price

- fully planned and tested showroom route,
- local transport with driver,
- **one** group dinner,
- logistics, timing and daily coordination,
- expert guide present throughout the tour.

Not included

- lunches (purchased independently, same as self-organised option),
- flights.



The Key Difference: Cost vs Confidence

From a purely financial perspective, both options are **very close in cost**. It is possible to reduce costs further by prioritising budget accommodation and transport options. This comparison, however, reflects conditions that support focus and effective decision-making rather than minimum spend

The difference lies in **how those two days are experienced**.

With the organised showroom tour:

- clients **never drive** in unfamiliar traffic or parking conditions,
- transfer time between showrooms (typically 10–30 minutes) becomes rest time,
- during that time clients can:
 - review photos,
 - make notes,
 - discuss decisions,
 - or simply recharge between stops.

Most importantly, clients are **never “stuck”**.

An **experienced, knowledgeable guide is always nearby**.

If something is unclear, if specifications raise questions, or if a comparison needs context, there is **always a competent person available to explain, clarify and guide the decision** — immediately, on the spot.

After two full days of showroom visits, this support becomes critical. Decision fatigue is real, and removing logistical stress — while adding expert reassurance — allows clients to stay focused on what actually matters:

choosing the right materials, finishes and furniture with confidence.

This comparison is not about finding the cheapest way to visit Poland.

It is about choosing a format that **maximises the value of two intensive days**, reduces uncertainty, **reduces stress** and supports better decisions.

That is the core advantage of the organised showroom tour.

Aspect	Self-Organised Trip	Organised Showroom Tour
Route Planning	Planned independently	Fully planned and tested route, timed to minimise traffic impact
Driving & Transport	Self-drive in unfamiliar traffic	Transport with driver, tour guide, support. Familiar with local area and product range in the stores
Time between showrooms	Driving, navigation, parking	Rest time - review notes, recharge
Decision support	Self-research only, limited on-site help	Expert guide always nearby
Getting “stuck”	Possible when unsure or overwhelmed	Never stuck - help available for any scenario
Energy & focus	Decreases over 2 full days	Preserved throughout the tour
Stress level	Higher (logistics + decisions)	Lower - logistics handled
Meals	All meals organised independently	1 dinner included, lunches and other meals independent
Typical total cost (2 people excl flights)	~€590 - ~€710	€550
Overall experience	Functional but demanding	Focused, supported, efficient



ABOUT THE AUTHOR

Michał Nowak

I work with international clients sourcing construction and finishing materials from Poland, but my role goes far beyond product sourcing alone. Over the years, I have built and continuously developed end-to-end purchasing and delivery models designed to make international buying simpler, safer and more cost-effective — both for individual self-builders and professional construction businesses.

My work sits at the intersection of strategy and execution. I am directly involved in supplier selection, pricing structures, logistics planning, and aftersales processes, while at the same time designing systems that scale, adapt and improve over time. The businesses behind this guide were not assembled from templates — they were built from scratch, refined through real projects, and adjusted repeatedly based on what actually works in practice.



This hands-on approach is intentional. International sourcing only works when strategic decisions are grounded in operational reality: how suppliers behave under pressure, how deliveries perform week after week, how problems are resolved when something goes wrong, and how clients experience the process from first enquiry to final delivery. I stay close to those details because they are where trust is earned or lost.

MAK Consulting, ImportFromPoland and Supersender were created to remove common points of friction in cross-border purchasing: fragmented communication, unclear pricing, divided responsibility and unnecessary risk. Each solution serves a different need, but all share the same objective — to replace uncertainty with structure, and complexity with clarity.

This guide reflects that philosophy. It is written for people who want to make informed decisions, understand the logic behind sourcing choices, and work with a partner who combines commercial awareness, operational discipline and long-term thinking — not just access to suppliers.

Thank you for taking the time to read this guide.

My hope is that it has helped you better understand how sourcing construction and finishing materials from Poland can work in practice — not as a collection of isolated purchases, but as a structured process that rewards preparation, clarity and good decision-making.

Whichever stage you are at, I appreciate your time and attention — and I wish you clarity and confidence in the decisions ahead.

Michał Nowak



ImportFromPoland